

For Research Use Only

# CoraLite® Plus 488-conjugated SLC6A12 Monoclonal antibody



Catalog Number: CL488-67700

## Basic Information

|   |  |   |
|---|--|---|
| <b>Catalog Number:</b><br>CL488-67700                             | <b>GenBank Accession Number:</b><br>BC126215   | <b>Purification Method:</b><br>Protein A purification                 |
| <b>Size:</b><br>100ul , Concentration: 1000 µg/ml by<br>Nanodrop; | <b>GeneID (NCBI):</b><br>6539  | <b>CloneNo.:</b><br>2C1G4   |
| <b>Source:</b><br>Mouse   | <b>Full Name:</b><br>solute carrier family 6<br>(neurotransmitter transporter,<br>betaine/GABA), member 12 | <b>Recommended Dilutions:</b><br>IF 1:50-1:500                        |
| <b>Isotype:</b><br>IgG2a  | <b>Calculated MW:</b><br>614 aa, 69 kDa  | <b>Excitation/Emission maxima<br/>wavelengths:</b><br>493 nm / 522 nm |
| <b>Immunogen Catalog Number:</b><br>AG18962                       | <b>Observed MW:</b><br>70 kDa  |   |

## Applications

|  |   |
|--|---|
| <b>Tested Applications:</b><br>FC (Intra), IF    | <b>Positive Controls:</b><br>IF : Caco-2 cells, |
| <b>Species Specificity:</b><br>Human, Mouse, Rat |   |

## Background Information

### Storage

**Storage:**  
Store at -20°C. Avoid exposure to light. Stable for one year after shipment.  
**Storage Buffer:**  
PBS with 50% Glycerol, 0.05% Proclin300, 0.5% BSA, pH 7.3.  
Aliquoting is unnecessary for -20°C storage

\*\*\* 20ul sizes contain 0.1% BSA

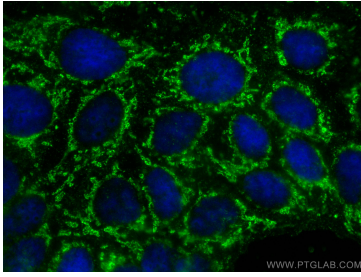
For technical support and original validation data for this product please contact:

T: 1 (888) 4PTGLAB (1-888-478-4522) (toll free  
in USA), or 1(312) 455-8498 (outside USA)

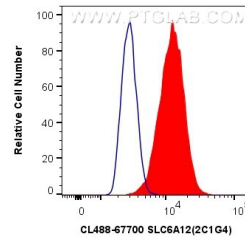
E: [proteintech@ptglab.com](mailto:proteintech@ptglab.com)  
W: [ptglab.com](http://ptglab.com)

This product is exclusively available under Proteintech Group brand and is not available to purchase from any other manufacturer.

## Selected Validation Data



Immunofluorescent analysis of (-20°C Ethanol) fixed Caco-2 cells using Coralite® Plus 488 SLC6A12 antibody (CL488-67700, Clone: 2C1G4) at dilution of 1:200.



1X10<sup>6</sup> MDA-MB-231 cells were intracellularly stained with 0.8 ug Coralite® Plus 488 Anti-Human SLC6A12 (CL488-67700, Clone:2C1G4) (red), or 0.8 ug Control Antibody. Cells were fixed with 4% PFA and permeabilized with Flow Cytometry Perm Buffer (PF00011-C).