

For Research Use Only

# CoraLite® Plus 488-conjugated GATA2 Monoclonal antibody

Catalog Number: CL488-67722



## Basic Information

Catalog Number:

CL488-67722

Size:

100ul , Concentration: 1000 ug/ml by Nanodrop;

Source:

Mouse

Isotype:

IgG1

Immunogen Catalog Number:

AG1557

GenBank Accession Number:

BC018988

GeneID (NCBI):

2624

ENSEMBL Gene ID:

ENSG00000179348

UNIPROT ID:

P23769

Full Name:

GATA binding protein 2

Observed MW:

50 kDa

Purification Method:

Protein G purification

CloneNo.:

2B5A1

Recommended Dilutions:

IF/ICC 1:50-1:500

Excitation/Emission maxima wavelengths:

493 nm / 522 nm

## Applications

Tested Applications:

IF/ICC, FC (Intra)

Species Specificity:

human, mouse

Positive Controls:

IF/ICC : SH-SY5Y cells,

## Background Information

GATA2 is a member of GATA family of transcription factors that contains zinc fingers in DNA binding domain. GATA2 acts as a transcriptional activator that regulates endothelin-1 expression in endothelial cells. Together with GATA3, GATA2 regulates adipocyte differentiation through molecular control of the preadipocyte-adipocyte transition. It also affect the activity of Rho inhibitor p190RhoGAP that controls capillary network formation in vitro and retinal angiogenesis in vivo.

## Storage

Storage:

Store at -20°C. Avoid exposure to light. Stable for one year after shipment.

Storage Buffer:

PBS with 50% Glycerol, 0.05% Proclin300, 0.5% BSA, pH 7.3.

Aliquoting is unnecessary for -20°C storage

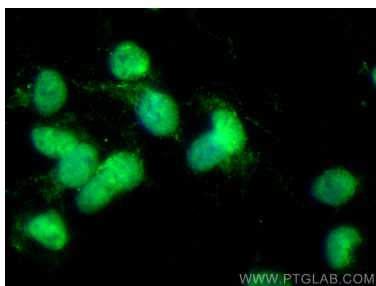
For technical support and original validation data for this product please contact:

T: 1 (888) 4PTGLAB (1-888-478-4522) (toll free in USA), or 1(312) 455-8498 (outside USA)

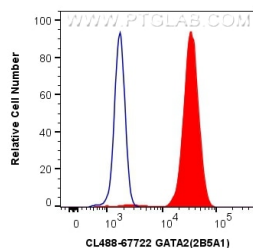
E: [proteintech@ptglab.com](mailto:proteintech@ptglab.com)  
W: [ptglab.com](http://ptglab.com)

This product is exclusively available under Proteintech Group brand and is not available to purchase from any other manufacturer.

## Selected Validation Data



Immunofluorescent analysis of (4% PFA) fixed SH-SY5Y cells using CoraLite® Plus 488 GATA2 antibody (CL488-67722, Clone: 2B5A1) at dilution of 1:200.



1X10<sup>6</sup> K-562 cells were intracellularly stained with 0.4 ug CoraLite® Plus 488 Anti-Human GATA2 (CL488-67722, Clone:2B5A1) (red), or 0.4 ug CoraLite® Plus 488 Mouse IgG1 Isotype Control (MOPC-21) (CL488-65124, Clone: MOPC-21) (blue). Cells were fixed and permeabilized with Transcription Factor Staining Buffer Kit (PF00011).