

For Research Use Only

# CoraLite® Plus 488-conjugated GSDME Monoclonal antibody

Catalog Number: CL488-67731



## Basic Information

Catalog Number:

CL488-67731

Size:

100ul , Concentration: 1000 ug/ml by Nanodrop;

Source:

Mouse

Isotype:

IgG1

Immunogen Catalog Number:

AG30514

GenBank Accession Number:

BC019689

GeneID (NCBI):

1687

UNIPROT ID:

O60443

Full Name:

deafness, autosomal dominant 5

Calculated MW:

496 aa, 55 kDa

Observed MW:

50-55 kDa

Purification Method:

Protein G purification

CloneNo.:

1D9C3

Recommended Dilutions:

WB 1:500-1:1000

Excitation/Emission maxima wavelengths:

493 nm / 522 nm

## Applications

Tested Applications:

WB, FC (Intra)

Species Specificity:

human, mouse, rat, pig

Positive Controls:

WB : SH-SY5Y cells,

## Background Information

DFNA5 (deafness, autosomal dominant 5), also known as GSDME or ICERE-1, is a 496 amino acid protein that is expressed in cochlea tissue, as well as in placenta, brain, heart, liver, lung and pancreas. Defects in the gene encoding DFNA5 are the cause of non-syndromic sensorineural deafness autosomal dominant type 5 (DFNA5), a form of sensorineural hearing loss that results from damage to one of various structures that receive sound information in the brain.

## Storage

Storage:

Store at -20°C. Avoid exposure to light. Stable for one year after shipment.

Storage Buffer:

PBS with 50% Glycerol, 0.05% Proclin300, 0.5% BSA, pH 7.3.

Aliquoting is unnecessary for -20°C storage

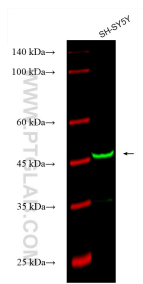
For technical support and original validation data for this product please contact:

T: 1 (888) 4PTGLAB (1-888-478-4522) (toll free in USA), or 1(312) 455-8498 (outside USA)

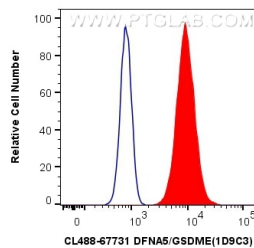
E: [proteintech@ptglab.com](mailto:proteintech@ptglab.com)  
W: [ptglab.com](http://ptglab.com)

This product is exclusively available under Proteintech Group brand and is not available to purchase from any other manufacturer.

## Selected Validation Data



Various lysates were subjected to SDS PAGE followed by western blot with CL488-67731 (DFNA5/GSDME antibody) at dilution of 1:500 incubated at room temperature for 1.5 hours.



1X10<sup>6</sup> SH-SY5Y cells were intracellularly stained with 0.4 ug CoraLite® Plus 488 Anti-Human DFNA5/GSDME (CL488-67731, Clone:1D9C3) (red), or 0.4 ug Control Antibody. Cells were fixed with 4% PFA and permeabilized with Flow Cytometry Perm Buffer (PF00011-C).