

For Research Use Only

# CoraLite® Plus 488-conjugated CTPS2 Monoclonal antibody

Catalog Number:CL488-67734



## Basic Information

Catalog Number:

CL488-67734

Size:

100ul , Concentration: 1000 ug/ml by Nanodrop;

Source:

Mouse

Isotype:

IgG2a

Immunogen Catalog Number:

AG30258

GenBank Accession Number:

BC034986

GeneID (NCBI):

56474

UNIPROT ID:

Q9NRF8

Full Name:

CTP synthase II

Calculated MW:

586 aa, 66 kDa

Observed MW:

66 kDa

Purification Method:

Protein A purification

CloneNo.:

1A3B8

Recommended Dilutions:

IF-P 1:50-1:500

Excitation/Emission maxima wavelengths:

493 nm / 522 nm

## Applications

Tested Applications:

IF-P

Species Specificity:

Human, Mouse

Positive Controls:

IF-P : human prostate cancer tissue,

## Background Information

CTPS2 (CTP synthase 2) is also named as UTP--ammonia ligase 2 and belongs to the CTP synthase family. It catalyzes the ATP-dependent amination of UTP to CTP with either L-glutamine or ammonia as the source of nitrogen and constitutes the rate-limiting enzyme in the synthesis of cytosine nucleotides.

## Storage

Storage:

Store at -20°C. Avoid exposure to light. Stable for one year after shipment.

Storage Buffer:

PBS with 50% Glycerol, 0.05% Proclin300, 0.5% BSA, pH 7.3.

Aliquoting is unnecessary for -20°C storage

For technical support and original validation data for this product please contact:

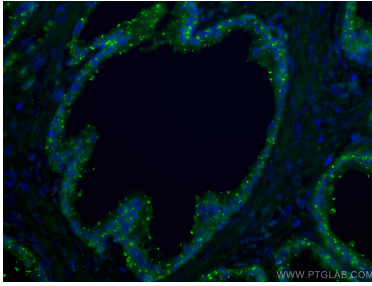
T: 1 (888) 4PTGLAB (1-888-478-4522) (toll free in USA), or 1(312) 455-8498 (outside USA)

E: [proteintech@ptglab.com](mailto:proteintech@ptglab.com)

W: [ptglab.com](http://ptglab.com)

This product is exclusively available under Proteintech Group brand and is not available to purchase from any other manufacturer.

## Selected Validation Data



Immunofluorescent analysis of (4% PFA) fixed human prostate cancer tissue using CoraLite® Plus 488 CTP52 antibody (CL488-67734, Clone: 1A3B8 ) at dilution of 1:200.