

For Research Use Only

# CoraLite® Plus 488-conjugated PTGES3 Monoclonal antibody



Catalog Number:CL488-67736

## Basic Information

<b>Catalog Number:</b> CL488-67736	<b>GenBank Accession Number:</b> BC003005	<b>Purification Method:</b> Protein G purification
<b>Size:</b> 100ul , Concentration: 1000 µg/ml by Nanodrop;	<b>GeneID (NCBI):</b> 10728	<b>CloneNo.:</b> 3C11D11
<b>Source:</b> Mouse	<b>Full Name:</b> prostaglandin E synthase 3 (cytosolic)	<b>Recommended Dilutions:</b> IF 1:50-1:500
<b>Isotype:</b> IgG1	<b>Calculated MW:</b> 19 kDa	<b>Excitation/Emission maxima wavelengths:</b> 488 nm / 515 nm
<b>Immunogen Catalog Number:</b> AG7870	<b>Observed MW:</b> 22 kDa	

## Applications

<b>Tested Applications:</b> FC (Intra), IF	<b>Positive Controls:</b> IF : HepG2 cells,
<b>Species Specificity:</b> Human, mouse, pig, rat	

## Background Information

P23, encoded by the gene PTGES3, plays a key role in glucocorticoid signaling and was increased at the mRNA level in the DLPFC in individuals with schizophrenia (PMID: 24345775). In the GR heterocomplex in vitro, p23 is an obligatory co-factor<sup>19</sup> and is the limiting component of the complex<sup>44</sup>, functioning to stabilize the interaction of the complex with GR in the cytoplasm. Paradoxically, p23 also acts in the nucleus to inhibit GR-mediated gene transcription and disassemble GR transcriptional machinery in the nucleus (PMID: 12077419). In vivo, p23 is critical for appropriate glucocorticoid responsiveness (PMID: 17000766).

## Storage

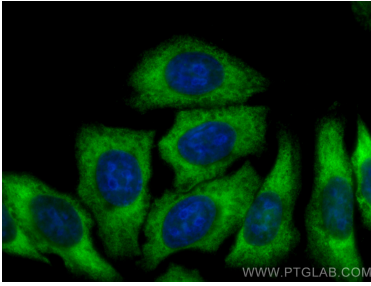
**Storage:**  
Store at -20°C. Avoid exposure to light.  
**Storage Buffer:**  
PBS with 50% Glycerol, 0.05% Proclin300, 0.5% BSA, pH 7.3.  
Aliquoting is unnecessary for -20°C storage

\*\*\* 20ul sizes contain 0.1% BSA

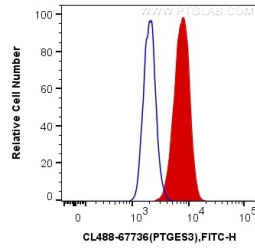
For technical support and original validation data for this product please contact:  
T: 1 (888) 4PTGLAB (1-888-478-4522) (toll free in USA), or 1(312) 455-8498 (outside USA)  
E: proteintech@ptglab.com  
W: ptglab.com

This product is exclusively available under Proteintech Group brand and is not available to purchase from any other manufacturer.

## Selected Validation Data



Immunofluorescent analysis of (-20°C Ethanol) fixed HepG2 cells using CoraLite® Plus 488 PTGES3 antibody (CL488-67736, Clone: 3C11D11) at dilution of 1:200.



1X10<sup>6</sup> HepG2 cells were intracellularly stained with 0.4 ug CoraLite® Plus 488 Anti-Human PTGES3 (CL488-67736, Clone: 3C11D11) (red), or 0.4 ug Mouse IgG1 Isotype Control (CL488-66360, Clone: T1F8D3F10) (blue). Cells were fixed with 4% PFA and permeabilized with Flow Cytometry Perm Buffer (PF00011-C).