

For Research Use Only

# CoraLite® Plus 488-conjugated SKP1 Monoclonal antibody



Catalog Number:CL488-67745

## Basic Information

<b>Catalog Number:</b> CL488-67745	<b>GenBank Accession Number:</b> BC009839	<b>Purification Method:</b> Protein A purification
<b>Size:</b> 100ul , Concentration: 1000 µg/ml by Nanodrop;	<b>GeneID (NCBI):</b> 6500	<b>CloneNo.:</b> 1D5G4
<b>Source:</b> Mouse	<b>Full Name:</b> S-phase kinase-associated protein 1	<b>Recommended Dilutions:</b> IF 1:50-1:500
<b>Isotype:</b> IgG2b	<b>Calculated MW:</b> 19 kDa	<b>Excitation/Emission maxima wavelengths:</b> 488 nm / 515 nm
<b>Immunogen Catalog Number:</b> AG30709		

## Applications

<b>Tested Applications:</b> IF	<b>Positive Controls:</b> IF : MCF-7 cells,
<b>Species Specificity:</b> Human	

## Background Information

SKP1(S-phase kinase-associated protein 1) is also named as EMC19, OCP2, SKP1A, TCEB1L,belongs to the SKP1 family.It is an essential component of the SCF (SKP1-CUL1-F-box protein) ubiquitin ligase complex, which mediates the ubiquitination of proteins involved in cell cycle progression, signal transduction and transcription.

## Storage

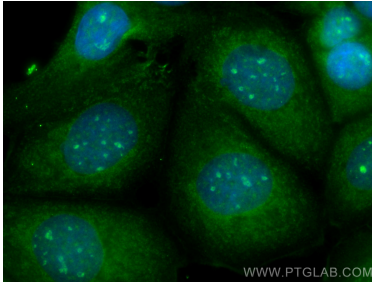
**Storage:**  
Store at -20°C. Avoid exposure to light. Stable for one year after shipment.  
**Storage Buffer:**  
PBS with 50% Glycerol, 0.05% Proclin300, 0.5% BSA, pH 7.3.  
Aliquoting is unnecessary for -20°C storage

\*\*\* 20ul sizes contain 0.1% BSA

For technical support and original validation data for this product please contact:  
T: 1 (888) 4PTGLAB (1-888-478-4522) (toll free in USA), or 1(312) 455-8498 (outside USA) E: proteintech@ptglab.com W: ptglab.com

This product is exclusively available under Proteintech Group brand and is not available to purchase from any other manufacturer.

## Selected Validation Data



Immunofluorescent analysis of (-20°C Methanol) fixed MCF-7 cells using CoraLite® Plus 488 SKP1 antibody (CL488-67745, Clone: 1D5G4) at dilution of 1:200.