

For Research Use Only

# CoraLite® Plus 488-conjugated IgG Heavy chain Monoclonal antibody



Catalog Number:CL488-67760

## Basic Information

Catalog Number:

CL488-67760

Size:

100ul , Concentration: 1000 µg/ml by  
Nanodrop;

Source:

Mouse

Isotype:

IgG2a

GenBank Accession Number:

GeneID (NCBI):

Full Name:

Calculated MW:

155 kDa

Observed MW:

~50 kDa

Purification Method:

Protein A purification

CloneNo.:

1C6B4

Recommended Dilutions:

IF 1:50-1:500

Excitation/Emission maxima  
wavelengths:

493 nm / 522 nm

## Applications

Tested Applications:

IF

Species Specificity:

Human

Positive Controls:

IF : human tonsillitis tissue,

## Background Information

This antibody detects the heavy chain of human IgG.

## Storage

Storage:

Store at -20°C. Avoid exposure to light.

Storage Buffer:

PBS with 50% Glycerol, 0.05% Proclin300, 0.5% BSA, pH 7.3.

Aliquoting is unnecessary for -20°C storage

\*\*\* 20ul sizes contain 0.1% BSA

For technical support and original validation data for this product please contact:

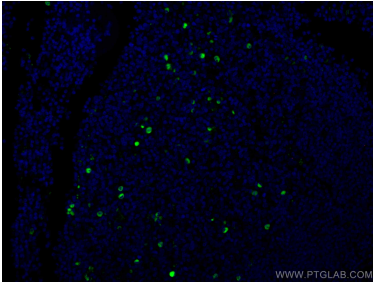
T: 1 (888) 4PTGLAB (1-888-478-4522) (toll free  
in USA), or 1(312) 455-8498 (outside USA)

E: [proteintech@ptglab.com](mailto:proteintech@ptglab.com)  
W: [ptglab.com](http://ptglab.com)

This product is exclusively available under Proteintech  
Group brand and is not available to purchase from any  
other manufacturer.

---

## Selected Validation Data



Immunofluorescent analysis of (4% PFA) fixed human tonsillitis tissue using CoraLite® Plus 488 Human IgG Heavy chain antibody (CL488-67760, Clone: 1C6B4) at dilution of 1:200.