

For Research Use Only

CoraLite® Plus 488-conjugated IgG Kappa chain Monoclonal antibody



Catalog Number: CL488-67761

Basic Information

Catalog Number: CL488-67761	GenBank Accession Number: GeneID (NCBI):	Purification Method: Protein G purification
Size: 100ul , Concentration: 1000 µg/ml by Nanodrop;	Full Name: Calculated MW: 155 kDa	CloneNo.: 4D11F7
Source: Mouse	Observed MW: ~25 kDa	Recommended Dilutions: IF 1:50-1:500
Isotype: IgG1		Excitation/Emission maxima wavelengths: 493 nm / 522 nm

Applications

Tested Applications: IF	Positive Controls: IF : human tonsillitis tissue,
Species Specificity: Human	

Background Information

This antibody detects the Kappa chain of human IgG.

Storage

Storage:
Store at -20°C. Avoid exposure to light.
Storage Buffer:
PBS with 50% Glycerol, 0.05% Proclin300, 0.5% BSA, pH 7.3.
Aliquoting is unnecessary for -20°C storage

*** 20ul sizes contain 0.1% BSA

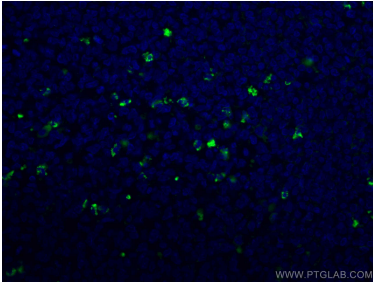
For technical support and original validation data for this product please contact:

T: 1 (888) 4PTGLAB (1-888-478-4522) (toll free
in USA), or 1(312) 455-8498 (outside USA)

E: proteintech@ptglab.com
W: ptglab.com

This product is exclusively available under Proteintech Group brand and is not available to purchase from any other manufacturer.

Selected Validation Data



Immunofluorescent analysis of (4% PFA) fixed human tonsillitis tissue using CoraLite® Plus 488 Human IgG Kappa chain antibody (CL488-67761, Clone: 4D11F7) at dilution of 1:200.