

For Research Use Only

CoraLite® Plus 488-conjugated IgG lambda chain Monoclonal antibody

Catalog Number: CL488-67762



Basic Information

Catalog Number: CL488-67762	GenBank Accession Number: BC007782	Purification Method: Protein A purification
Size: 100ul , Concentration: 1000 ug/ml by Nanodrop;	GeneID (NCBI): 3537	CloneNo.: 1D12B5
Source: Mouse	Full Name: immunoglobulin lambda constant 1 (Mcg marker)	Recommended Dilutions: IF-P 1:50-1:500
Isotype: IgG2a	Calculated MW: 233 aa, 25 kDa	Excitation/Emission maxima wavelengths: 493 nm / 522 nm
Immunogen Catalog Number: AG14783	Observed MW: ~25 kDa	

Applications

Tested Applications: IF-P	Positive Controls: IF-P : human tonsillitis tissue,
Species Specificity: Human	

Background Information

This antibody detects Lambda chain of human IgG.

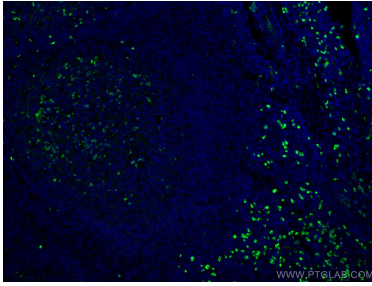
Storage

Storage:
Store at -20°C. Avoid exposure to light. Stable for one year after shipment.
Storage Buffer:
PBS with 50% Glycerol, 0.05% Proclin300, 0.5% BSA, pH 7.3.
Aliquoting is unnecessary for -20°C storage

For technical support and original validation data for this product please contact:
T: 1 (888) 4PTGLAB (1-888-478-4522) (toll free in USA), or 1(312) 455-8498 (outside USA)
E: proteintech@ptglab.com
W: ptglab.com

This product is exclusively available under Proteintech Group brand and is not available to purchase from any other manufacturer.

Selected Validation Data



Immunofluorescent analysis of (4% PFA) fixed human tonsillitis tissue using Coralite® Plus 488 Human IgG lambda chain antibody (CL488-67762, Clone: 1D12B5) at dilution of 1:200.