

For Research Use Only

CoraLite® Plus 488-conjugated SAR1B Monoclonal antibody



Catalog Number: CL488-67765

Basic Information

Catalog Number: CL488-67765	GenBank Accession Number: BC002847	Purification Method: Protein G purification
Size: 100ul , Concentration: 1000 µg/ml by Nanodrop;	GeneID (NCBI): 51128	CloneNo.: 1B11A1
Source: Mouse	Full Name: SAR1 homolog B (S. cerevisiae)	Excitation/Emission maxima wavelengths: 493 nm / 522 nm
Isotype: IgG1	Calculated MW: 22 kDa	
Immunogen Catalog Number: AG7718	Observed MW: 22-25 kDa	

Applications

Tested Applications:
FC (Intra)

Species Specificity:
Human, mouse, rat, pig, rabbit

Background Information

SAR1B, also named as SARA2, SARB and GTBPB, belongs to the small GTPase superfamily and SAR1 family. It is involved in transport from the endoplasmic reticulum to the Golgi apparatus. SAR1B is activated by the guanine nucleotide exchange factor PREB. It is involved in the selection of the protein cargo and the assembly of the COPII coat complex.

Storage

Storage:
Store at -20°C. Avoid exposure to light. Stable for one year after shipment.

Storage Buffer:
PBS with 50% Glycerol, 0.05% Proclin300, 0.5% BSA, pH 7.3.

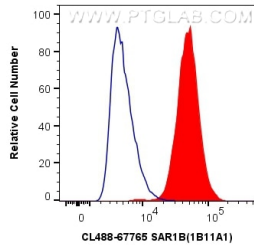
Aliquoting is unnecessary for -20°C storage

*** 20ul sizes contain 0.1% BSA

For technical support and original validation data for this product please contact:
T: 1 (888) 4PTGLAB (1-888-478-4522) (toll free in USA), or 1(312) 455-8498 (outside USA) E: proteintech@ptglab.com W: ptglab.com

This product is exclusively available under Proteintech Group brand and is not available to purchase from any other manufacturer.

Selected Validation Data



1X10⁶ HEK-293T cells were intracellularly stained with 0.4 ug CoraLite® Plus 488 Anti-Human SAR1B (CL488-67765, Clone:1B11A1) (red), or 0.4 ug Isotype Control. Cells were fixed with 4% PFA and permeabilized with Flow Cytometry Perm Buffer (PF00011-C).