

For Research Use Only

CoraLite® Plus 488-conjugated ALCAM Monoclonal antibody

Catalog Number: CL488-67768



Basic Information

Catalog Number:

CL488-67768

Size:

100ul , Concentration: 1000 ug/ml by
Nanodrop;

Source:

Mouse

Isotype:

IgG1

Immunogen Catalog Number:

AG16892

GenBank Accession Number:

BC137097

GeneID (NCBI):

214

UNIPROT ID:

Q13740

Full Name:

activated leukocyte cell adhesion
molecule

Calculated MW:

583 aa, 65 kDa

Observed MW:

90-100 kDa

Purification Method:

Protein G purification

CloneNo.:

1F7D6

Recommended Dilutions:

IF-P 1:50-1:500

Excitation/Emission maxima
wavelengths:

493 nm / 522 nm

Applications

Tested Applications:

IF-P

Species Specificity:

Human

Positive Controls:

IF-P : human breast cancer tissue,

Background Information

Activated leukocyte cell adhesion molecule (ALCAM, also known as CD166) is a cell adhesion molecule that belongs to the immunoglobulin superfamily. It is involved in cell-cell adhesion through homophilic and heterophilic (to CD6) interactions. ALCAM is widely expressed in a variety of normal tissues. Altered ALCAM expression has been associated with the differentiation state and progression in some neoplasms including melanoma, prostate, colorectal, and breast cancers (PMID: 20461761; 18172759).

Storage

Storage:

Store at -20°C. Avoid exposure to light. Stable for one year after shipment.

Storage Buffer:

PBS with 50% Glycerol, 0.05% Proclin300, 0.5% BSA, pH 7.3.

Aliquoting is unnecessary for -20°C storage

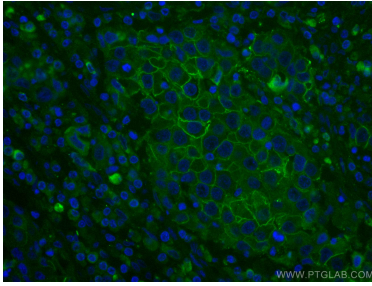
For technical support and original validation data for this product please contact:

T: 1 (888) 4PTGLAB (1-888-478-4522) (toll free
in USA), or 1(312) 455-8498 (outside USA)

E: proteintech@ptglab.com
W: ptglab.com

This product is exclusively available under Proteintech Group brand and is not available to purchase from any other manufacturer.

Selected Validation Data



Immunofluorescent analysis of (4% PFA) fixed human breast cancer tissue using CoraLite® Plus 488 ALCAM antibody (CL488-67768, Clone: 1F7D6) at dilution of 1:200.