

For Research Use Only

CoraLite® Plus 488-conjugated GALE Monoclonal antibody



Catalog Number:CL488-67772

Basic Information

Catalog Number: CL488-67772	GenBank Accession Number: BC050685	Purification Method: Protein A purification
Size: 100ul , Concentration: 1000 µg/ml by Nanodrop;	GeneID (NCBI): 2582	CloneNo.: 3F2C2
Source: Mouse	Full Name: UDP-galactose-4-epimerase	Excitation/Emission maxima wavelengths: 488 nm / 515 nm
Isotype: IgG2b	Calculated MW: 38 kDa	
Immunogen Catalog Number: AG6571	Observed MW: 38 kDa	

Applications

Tested Applications:
FC (Intra)

Species Specificity:
Human

Background Information

GALE(Galactowaldenase) is also named as UDP-glucose 4-epimerase, UDP-galactose 4-epimerase, and belongs to the sugar epimerase family. UDP-galactose 4-epimerase catalyzes the interconversion of UDP-glucose and UDP-galactose during normal galactose metabolism. In humans, deficiencies in this enzyme lead to the complex disorder referred to as epimerase-deficiency galactosemia(PMID:10801319).It can exist as a homodimer(PMID:8931134).

Storage

Storage:
Store at -20°C. Avoid exposure to light. Stable for one year after shipment.

Storage Buffer:
PBS with 50% Glycerol, 0.05% Proclin300, 0.5% BSA, pH 7.3.

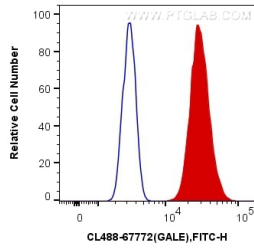
Aliquoting is unnecessary for -20°C storage

*** 20ul sizes contain 0.1% BSA

For technical support and original validation data for this product please contact:
T: 1 (888) 4PTGLAB (1-888-478-4522) (toll free in USA), or 1(312) 455-8498 (outside USA) E: proteintech@ptglab.com W: ptglab.com

This product is exclusively available under Proteintech Group brand and is not available to purchase from any other manufacturer.

Selected Validation Data



1X10⁶ HeLa cells were intracellularly stained with 0.4 ug CoraLite® Plus 488 Anti-Human GALE (CL488-67772, Clone:3F2C2) (red), or 0.4 ug Mouse IgG2b Isotype Control (CL488-66360-3, Clone: K11B8C4B5) (blue). Cells were fixed with 4% PFA and permeabilized with Flow Cytometry Perm Buffer (PF00011-C).