

For Research Use Only



# CoraLite® Plus 488-conjugated TMEM74 Monoclonal antibody

Catalog Number: **CL488-67773**

## Basic Information

<b>Catalog Number:</b> CL488-67773	<b>GenBank Accession Number:</b> BC030710	<b>Purification Method:</b> Protein G purification
<b>Size:</b> 100ul , Concentration: 1000 µg/ml by Nanodrop;	<b>GeneID (NCBI):</b> 157753	<b>CloneNo.:</b> 2H1B7
<b>Source:</b> Mouse	<b>UNIPROT ID:</b> Q96NL1	<b>Excitation/Emission maxima wavelengths:</b> 493 nm / 522 nm
<b>Isotype:</b> IgG1	<b>Full Name:</b> transmembrane protein 74	
<b>Immunogen Catalog Number:</b> AG22359	<b>Calculated MW:</b> 305 aa, 33 kDa	
	<b>Observed MW:</b> 33 kDa	

## Applications

**Tested Applications:**  
FC (Intra)

**Species Specificity:**  
Human

## Background Information

Transmembrane protein 74 (TMEM74), plays an essential role in autophagy during cell starvation and other stress conditions. TMEM74 is localized to the lysosome and autophagosome. It has been reported that TMEM74-induced autophagy may be associated with PI3K signal transduction. (PMID: 19029833, 18294959)

## Storage

**Storage:**  
Store at -20°C. Avoid exposure to light. Stable for one year after shipment.

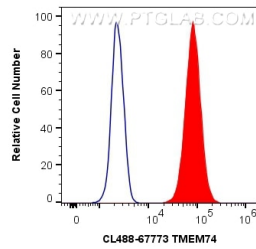
**Storage Buffer:**  
PBS with 50% Glycerol, 0.05% Proclin300, 0.5% BSA, pH 7.3.

**Aliquoting is unnecessary for -20°C storage**

For technical support and original validation data for this product please contact:  
T: 1 (888) 4PTGLAB (1-888-478-4522) (toll free in USA), or 1(312) 455-8498 (outside USA)  
E: [proteintech@ptglab.com](mailto:proteintech@ptglab.com)  
W: [ptglab.com](http://ptglab.com)

This product is exclusively available under Proteintech Group brand and is not available to purchase from any other manufacturer.

## Selected Validation Data



$1 \times 10^6$  HEK-293 cells were intracellularly stained with 0.4  $\mu$ g CoraLite® Plus 488 Anti-Human TMEM74 (CL488-67773, Clone:2H1B7) (red), or 0.4  $\mu$ g Control Antibody. Cells were fixed with 4% PFA and permeabilized with Flow Cytometry Perm Buffer (PF00011-C).