

For Research Use Only

CoraLite® Plus 488-conjugated HK3 Monoclonal antibody

Catalog Number:CL488-67803



Basic Information

Catalog Number:

CL488-67803

Size:

100ul , Concentration: 1000 ug/ml by Nanodrop;

Source:

Mouse

Isotype:

IgG1

Immunogen Catalog Number:

AG30798

GenBank Accession Number:

BC028129

GeneID (NCBI):

3101

UNIPROT ID:

P52790

Full Name:

hexokinase 3 (white cell)

Calculated MW:

923 aa, 99 kDa

Observed MW:

99 kDa

Purification Method:

Protein G purification

CloneNo.:

3H3C7

Recommended Dilutions:

IF/ICC 1:50-1:500

Excitation/Emission maxima wavelengths:

493 nm / 522 nm

Applications

Tested Applications:

IF/ICC, FC (Intra)

Species Specificity:

human, mouse, rat, pig

Positive Controls:

IF/ICC : HeLa cells,

Background Information

Hexokinases phosphorylate glucose to produce glucose-6-phosphate (G6P), the first step in most glucose metabolism pathways. Hexokinase 3 also known as HK3, similar to hexokinases 1 and 2, this allosteric enzyme is inhibited by its product glucose-6-phosphate.

Storage

Storage:

Store at -20°C. Avoid exposure to light. Stable for one year after shipment.

Storage Buffer:

PBS with 50% Glycerol, 0.05% Proclin300, 0.5% BSA, pH 7.3.

Aliquoting is unnecessary for -20°C storage

For technical support and original validation data for this product please contact:

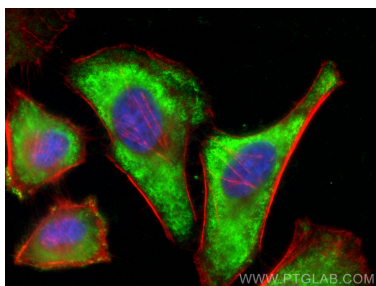
T: 1 (888) 4PTGLAB (1-888-478-4522) (toll free in USA), or 1(312) 455-8498 (outside USA)

E: proteintech@ptglab.com

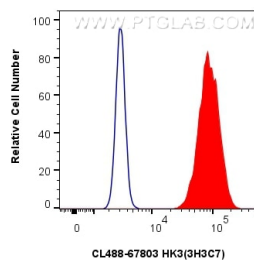
W: ptglab.com

This product is exclusively available under Proteintech Group brand and is not available to purchase from any other manufacturer.

Selected Validation Data



Immunofluorescent analysis of (-20°C Ethanol) fixed HeLa cells using Coralite® Plus 488 HK3 antibody (CL488-67803, Clone: 3H3C7) at dilution of 1:200, CL594-Phalloidin (red).



1x10⁶ HeLa cells were intracellularly stained with 0.4 ug Coralite® Plus 488 Hk3 Monoclonal Antibody (CL488-67803, Clone:3H3C7)(red), or 0.4 ug Coralite® Plus 488 Mouse IgG1 Isotype Control (MOPC-21) (CL488-65124, Clone: MOPC-21) (blue). Cells were fixed with 4% PFA and permeabilized with Flow Cytometry Perm Buffer (PF00011-C).