

For Research Use Only

# CoraLite® Plus 488-conjugated PSMD13 Monoclonal antibody

Catalog Number:CL488-67807



## Basic Information

Catalog Number:

CL488-67807

Size:

100ul , Concentration: 1000 ug/ml by  
Nanodrop;

Source:

Mouse

Isotype:

IgG1

Immunogen Catalog Number:

AG7857

GenBank Accession Number:

BC001100

GeneID (NCBI):

5719

UNIPROT ID:

Q9UNM6

Full Name:

proteasome (prosome, macropain)  
26S subunit, non-ATPase, 13

Calculated MW:

43 kDa

Observed MW:

43 kDa

Purification Method:

Protein G purification

CloneNo.:

2G10G6

Recommended Dilutions:

IF/ICC 1:50-1:500

Excitation/Emission maxima  
wavelengths:

493 nm / 522 nm

## Applications

Tested Applications:

IF/ICC

Species Specificity:

Human, mouse, rat

Positive Controls:

IF/ICC : HepG2 cells,

## Storage

Storage:

Store at -20°C. Avoid exposure to light. Stable for one year after shipment.

Storage Buffer:

PBS with 50% Glycerol, 0.05% Proclin300, 0.5% BSA, pH 7.3.

Aliquoting is unnecessary for -20°C storage

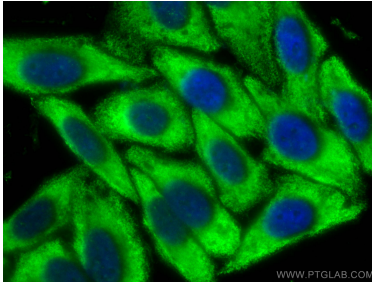
For technical support and original validation data for this product please contact:

T: 1 (888) 4PTGLAB (1-888-478-4522) (toll free  
in USA), or 1(312) 455-8498 (outside USA)

E: [proteintech@ptglab.com](mailto:proteintech@ptglab.com)  
W: [ptglab.com](http://ptglab.com)

This product is exclusively available under Proteintech  
Group brand and is not available to purchase from any  
other manufacturer.

## Selected Validation Data



Immunofluorescent analysis of (-20°C Ethanol)  
fixed HepG2 cells using Coralite® Plus 488  
PSMD13 antibody (CL488-67807, Clone: 2G10G6 )  
at dilution of 1:200.