

For Research Use Only

CoraLite® Plus 488-conjugated FXR1 Monoclonal antibody



Catalog Number: **CL488-67813**

Basic Information

Catalog Number: CL488-67813	GenBank Accession Number: BC028983	Purification Method: Protein G purification
Size: 100ul , Concentration: 1000 µg/ml by Nanodrop;	GeneID (NCBI): 8087	CloneNo.: 1E12E8
Source: Mouse	Full Name: fragile X mental retardation, autosomal homolog 1	Recommended Dilutions: IF 1:50-1:500
Isotype: IgG1	Calculated MW: 621 aa, 70 kDa	Excitation/Emission maxima wavelengths: 493 nm / 522 nm
Immunogen Catalog Number: AG27800	Observed MW: 70-80 kDa	

Applications

Tested Applications: IF	Positive Controls: IF : HeLa cells, mouse brain tissue
Species Specificity: Human, mouse, rat	

Background Information

Tumour necrosis factor-alpha (TNF-alpha) is a key mediator of inflammation in host defence against infection and in autoimmune disease. Its production is controlled post-transcriptionally by multiple RNA-binding proteins that interact with the TNF-alpha AU-rich element and regulate its expression; Fragile X mental retardation-related protein 1 (FXR1) is one of these. FXR1 (fragile-X-mental retardation-related protein 1) are RNA-binding proteins that have been demonstrated to impact miRNA-mediated, post-transcriptional gene regulation, and required for embryonic and postnatal development of muscle tissue. It can regulate intracellular transport and local translation of certain mRNAs. The FXR1 exists some isoforms with the MV 69 kDa and 60 kDa.

Storage

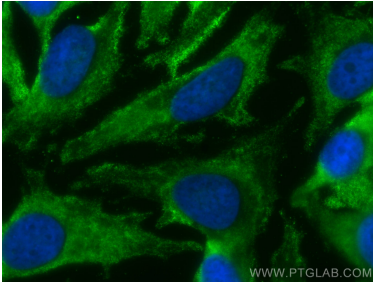
Storage:
Store at -20°C. Avoid exposure to light. Stable for one year after shipment.
Storage Buffer:
PBS with 50% Glycerol, 0.05% Proclin300, 0.5% BSA, pH 7.3.
Aliquoting is unnecessary for -20°C storage

***** 20ul sizes contain 0.1%BSA**

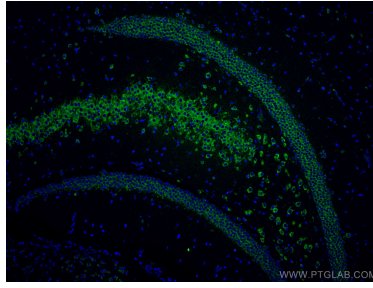
For technical support and original validation data for this product please contact:
T: 1 (888) 4PTGLAB (1-888-478-4522) (toll free in USA), or 1(312) 455-8498 (outside USA)
E: proteintech@ptglab.com
W: ptglab.com

This product is exclusively available under Proteintech Group brand and is not available to purchase from any other manufacturer.

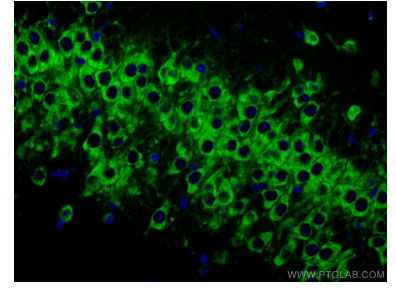
Selected Validation Data



Immunofluorescent analysis of (-20°C Methanol) fixed HeLa cells using CoraLite® Plus 488 FXR1 antibody (CL488-67813, Clone: 1E12E8) at dilution of 1:200.



Immunofluorescent analysis of (4% PFA) fixed mouse brain tissue using CoraLite® Plus 488 FXR1 antibody (CL488-67813, Clone: 1E12E8) at dilution of 1:200. DAPI (Blue).



Immunofluorescent analysis of (4% PFA) fixed mouse brain tissue using CoraLite® Plus 488 FXR1 antibody (CL488-67813, Clone: 1E12E8) at dilution of 1:200. DAPI (Blue).