

For Research Use Only

CoraLite® Plus 488-conjugated DAPK1 Monoclonal antibody

Catalog Number:CL488-67815



Basic Information

Catalog Number:

CL488-67815

Size:

100ul , Concentration: 1000 ug/ml by Nanodrop;

Source:

Mouse

Isotype:

IgG1

Immunogen Catalog Number:

AG29838

GenBank Accession Number:

BC113660

GeneID (NCBI):

1612

UNIPROT ID:

P53355

Full Name:

death-associated protein kinase 1

Calculated MW:

1430 aa, 160 kDa

Observed MW:

160 kDa

Purification Method:

Protein G purification

CloneNo.:

1E2F9

Recommended Dilutions:

IF-P 1:50-1:500

Excitation/Emission maxima wavelengths:

493 nm / 522 nm

Applications

Tested Applications:

IF-P

Species Specificity:

Human, Mouse, Rat

Positive Controls:

IF-P : human breast cancer tissue,

Background Information

DAPK1(Death-associated protein kinase 1) is a stress-activated tumor suppressor protein that plays a role in both proapoptotic or antiapoptotic signal transduction pathways. Loss of DAPK1 expression is associated with a selective advantage for tumor cells to resist apoptotic stimuli, allowing them to separate from the original tumor; from this point of view, DAPK1 could be considered a tumor metastases inhibitor gene(PMID:17319784).

Storage

Storage:

Store at -20°C. Avoid exposure to light. Stable for one year after shipment.

Storage Buffer:

PBS with 50% Glycerol, 0.05% Proclin300, 0.5% BSA, pH 7.3.

Aliquoting is unnecessary for -20°C storage

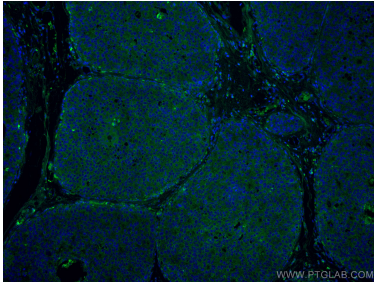
For technical support and original validation data for this product please contact:

T: 1 (888) 4PTGLAB (1-888-478-4522) (toll free in USA), or 1(312) 455-8498 (outside USA)

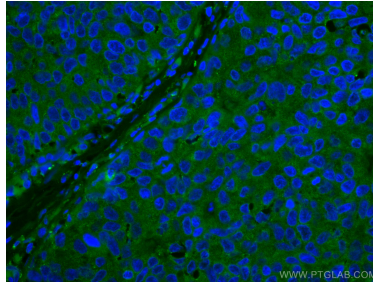
E: proteintech@ptglab.com
W: ptglab.com

This product is exclusively available under Proteintech Group brand and is not available to purchase from any other manufacturer.

Selected Validation Data



Immunofluorescent analysis of (4% PFA) fixed human breast cancer tissue using Coralite® Plus 488 DAPI1 antibody (CL488-67815, Clone: 1E2F9) at dilution of 1:200.



Immunofluorescent analysis of (4% PFA) fixed human breast cancer tissue using Coralite® Plus 488 DAPI1 antibody (CL488-67815, Clone: 1E2F9) at dilution of 1:200.