

For Research Use Only

CoraLite® Plus 488-conjugated TOE1 Monoclonal antibody

Catalog Number: CL488-67829



Basic Information

Catalog Number: CL488-67829	GenBank Accession Number: BC009364	Purification Method: Protein A purification
Size: 100ul , Concentration: 1000 ug/ml by Nanodrop;	GeneID (NCBI): 114034	CloneNo.: 2C10H7
Source: Mouse	UNIPROT ID: Q96GM8	Recommended Dilutions: IF/ICC 1:50-1:500
Isotype: IgG2a	Full Name: target of EGR1, member 1 (nuclear)	Excitation/Emission maxima wavelengths: 493 nm / 522 nm
Immunogen Catalog Number: AG28982	Calculated MW: 510 aa, 57 kDa	
	Observed MW: 57 kDa	

Applications

Tested Applications: IF/ICC, FC (Intra)	Positive Controls: IF/ICC : HepG2 cells,
Species Specificity: human	

Background Information

TOE1, also known as hCaf1z, belongs to the DEDD family of deadenylases. TOE1 was initially identified as a direct target gene of ERG1, an immediate early transcription factor. TOE1 encodes an Asp-Glu-Asp-Asp deadenylase that specifically localizes to Cajal bodies in the nucleus, where assembly and maturation of small nuclear ribonucleoprotein particles, and telomerase ribonucleoprotein complex take place (PMID: 36257135). TOE1 has 2 isoforms with the molecular mass of 48 and 57 kDa.

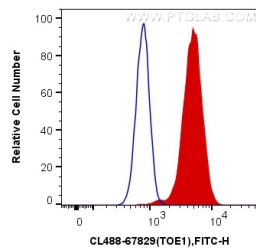
Storage

Storage:
Store at -20°C. Avoid exposure to light. Stable for one year after shipment.
Storage Buffer:
PBS with 50% Glycerol, 0.05% Proclin300, 0.5% BSA, pH 7.3.
Aliquoting is unnecessary for -20°C storage

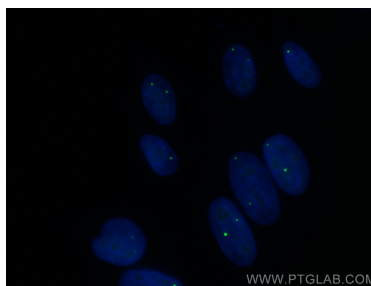
For technical support and original validation data for this product please contact:
T: 1 (888) 4PTGLAB (1-888-478-4522) (toll free in USA), or 1(312) 455-8498 (outside USA)
E: proteintech@ptglab.com
W: ptglab.com

This product is exclusively available under Proteintech Group brand and is not available to purchase from any other manufacturer.

Selected Validation Data



1X10⁶ HepG2 cells were intracellularly stained with 0.4 ug CoraLite® Plus 488 Anti-Human TOE1 (CL488-67829, Clone:2C10H7) (red), or 0.4 ug Mouse IgG2a Isotype Control (CL488-66360-2, Clone: K11A1B2A2) (blue). Cells were fixed and permeabilized with Transcription Factor Staining Buffer Kit (PF00011).



Immunofluorescent analysis of (4% PFA) fixed HepG2 cells using CoraLite® Plus 488 TOE1 antibody (CL488-67829, Clone: 2C10H7) at dilution of 1:200.