

For Research Use Only

CoraLite® Plus 488-conjugated RAB1B Monoclonal antibody



Catalog Number:CL488-67837

Basic Information

| | | |
|---|--|---|
| Catalog Number: CL488-67837 | GenBank Accession Number: BC071169 | Purification Method: Protein G purification |
| Size: 100ul , Concentration: 1000 µg/ml by Nanodrop; | GeneID (NCBI): 81876 | CloneNo.: 3C2G6 |
| Source: Mouse | Full Name: RAB1B, member RAS oncogene family | Recommended Dilutions: IF 1:50-1:500 |
| Isotype: IgG1 | Calculated MW: 201 aa, 22 kDa | Excitation/Emission maxima wavelengths: 493 nm / 522 nm |
| Immunogen Catalog Number: AG12069 | Observed MW: 22 kDa | |

Applications

| | |
|--|--|
| Tested Applications: FC (Intra), IF | Positive Controls: IF : MCF-7 cells, |
| Species Specificity: Human, mouse, rat | |

Background Information

Storage

Storage:
Store at -20°C. Avoid exposure to light. Stable for one year after shipment.
Storage Buffer:
PBS with 50% Glycerol, 0.05% Proclin300, 0.5% BSA, pH 7.3.
Aliquoting is unnecessary for -20°C storage

*** 20ul sizes contain 0.1% BSA

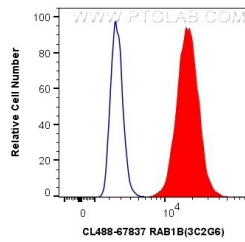
For technical support and original validation data for this product please contact:

T: 1 (888) 4PTGLAB (1-888-478-4522) (toll free
in USA), or 1(312) 455-8498 (outside USA)

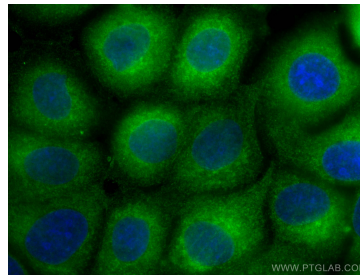
E: proteintech@ptglab.com
W: ptglab.com

This product is exclusively available under Proteintech Group brand and is not available to purchase from any other manufacturer.

Selected Validation Data



1X10⁶ MCF-7 cells were intracellularly stained with 0.4 ug CoraLite® Plus 488 Anti-Human RAB1B (CL488-67837, Clone:3C2G6) (red), or 0.4 ug Control Antibody. Cells were fixed with 4% PFA and permeabilized with Flow Cytometry Perm Buffer (PF00011-C).



Immunofluorescent analysis of (-20°C Methanol) fixed MCF-7 cells using CoraLite® Plus 488 RAB1B antibody (CL488-67837, Clone: 3C2G6) at dilution of 1:200.