

For Research Use Only

# CoraLite® Plus 488-conjugated CAPNS1 Monoclonal antibody

Catalog Number: CL488-67838



## Basic Information

<b>Catalog Number:</b> CL488-67838	<b>GenBank Accession Number:</b> BC011903	<b>Purification Method:</b> Protein G purification
<b>Size:</b> 100ul , Concentration: 1000 ug/ml by Nanodrop;	<b>GeneID (NCBI):</b> 826	<b>CloneNo.:</b> 2B6G6
<b>Source:</b> Mouse	<b>UNIPROT ID:</b> P04632	<b>Recommended Dilutions:</b> IF/ICC 1:50-1:500
<b>Isotype:</b> IgG1	<b>Full Name:</b> calpain, small subunit 1	<b>Excitation/Emission maxima wavelengths:</b> 493 nm / 522 nm
<b>Immunogen Catalog Number:</b> AG21885	<b>Calculated MW:</b> 28 kDa	

## Applications

<b>Tested Applications:</b> IF/ICC, FC (Intra)	<b>Positive Controls:</b> IF/ICC : A431 cells,
<b>Species Specificity:</b> human, rat	

## Background Information

CAPNS1 is also named as CANP, CDPS, CSS1, CANPS, CAPN4 and CALPAIN4. It is a member of the calpain small subunit family, and belongs to the calcium-dependent family. Calpains are calcium-dependent cysteine proteinases that are widely distributed in mammalian cells. The small regulatory subunit consists of an N-terminal domain, containing about 30% glycine residues and a C-terminal Ca-binding domain (PMID: 9228946). This encoded protein is essential for the stability and function of both calpain heterodimers, whose proteolytic activities influence various cellular functions including apoptosis, proliferation, migration, adhesion, and autophagy. Calpains have been implicated in neurodegenerative processes, such as myotonic dystrophy.

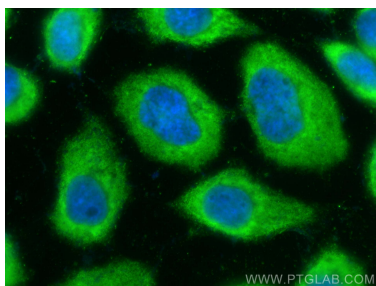
## Storage

**Storage:**  
Store at -20°C. Avoid exposure to light. Stable for one year after shipment.  
**Storage Buffer:**  
PBS with 50% Glycerol, 0.05% Proclin300, 0.5% BSA, pH 7.3.  
Aliquoting is unnecessary for -20°C storage

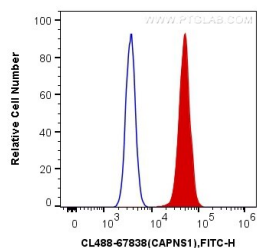
For technical support and original validation data for this product please contact:  
T: 1 (888) 4PTGLAB (1-888-478-4522) (toll free in USA), or 1(312) 455-8498 (outside USA)  
E: [proteintech@ptglab.com](mailto:proteintech@ptglab.com)  
W: [ptglab.com](http://ptglab.com)

This product is exclusively available under Proteintech Group brand and is not available to purchase from any other manufacturer.

## Selected Validation Data



Immunofluorescent analysis of (-20°C Methanol) fixed A431 cells using CoraLite® Plus 488 CAPNS1 antibody (CL488-67838, Clone: 2B6G6) at dilution of 1:200.



1X10<sup>6</sup> HeLa cells were intracellularly stained with 0.4 ug CoraLite® Plus 488 Anti-Human CAPNS1 (CL488-67838, Clone:2B6G6) (red), or 0.4 ug Mouse IgG1 Isotype Control (CL488-66360, Clone: T1F8D3F10) (blue). Cells were fixed with 4% PFA and permeabilized with Flow Cytometry Perm Buffer (PF00011-C).