

For Research Use Only

CoraLite® Plus 488-conjugated CIP2A Monoclonal antibody



Catalog Number:CL488-67843

Basic Information

Catalog Number: CL488-67843	GenBank Accession Number: BC130564	Purification Method: Protein G purification
Size: 100ul , Concentration: 1000 µg/ml by Nanodrop;	GeneID (NCBI): 57650	CloneNo.: 2A3F3
Source: Mouse	Full Name: KIAA1524	Recommended Dilutions: IF 1:50-1:500
Isotype: IgG1	Calculated MW: 905 aa, 102 kDa	
Immunogen Catalog Number: AG19598	Observed MW: 102 kDa	

Applications

Tested Applications: FC (Intra), IF	Positive Controls: IF : HeLa cells,
Species Specificity: Human, rat	

Background Information

Cancerous inhibitor of protein phosphatase 2A (CIP2A) was originally identified as a cellular protein phosphatase 2A (PP2A) inhibitor, and has been shown to control oncogenic cellular signals by suppressing the tumor suppressor PP2A. CIP2A overexpression has been found in several human malignancies including breast cancer, hepatocellular carcinoma, gastric cancer, head and neck cancer, colon cancer, prostate cancer and non-small cell lung cancer. CIP2A is a 83-102 kDa cytoplasmic protein. (PMID: 26824320, PMID: 25458953, PMID: 29720672)

Storage

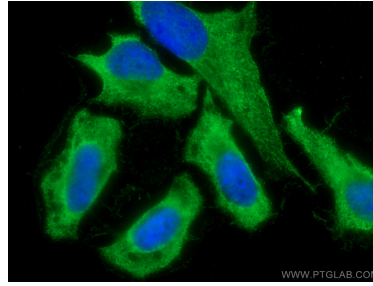
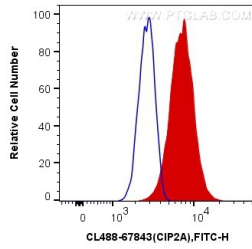
Storage:
Store at -20°C. Avoid exposure to light. Stable for one year after shipment.
Storage Buffer:
PBS with 50% Glycerol, 0.05% Proclin300, 0.5% BSA, pH 7.3.
Aliquoting is unnecessary for -20°C storage

*** 20ul sizes contain 0.1% BSA

For technical support and original validation data for this product please contact:
T: 1 (888) 4PTGLAB (1-888-478-4522) (toll free in USA), or 1(312) 455-8498 (outside USA) E: proteintech@ptglab.com W: ptglab.com

This product is exclusively available under Proteintech Group brand and is not available to purchase from any other manufacturer.

Selected Validation Data



1X10⁶ HeLa cells were intracellularly stained with 0.4 ug CoraLite® Plus 488 Anti-Human CIP2A (CL488-67843, Clone:2A3F3) (red), or 0.4 ug Control Antibody. Cells were fixed with 4% PFA and permeabilized with Flow Cytometry Perm Buffer (PF00011-C).

Immunofluorescent analysis of (-20°C Ethanol) fixed HeLa cells using CoraLite® Plus 488 CIP2A antibody (CL488-67843, Clone: 2A3F3) at dilution of 1:200.