

For Research Use Only

CoraLite® Plus 488-conjugated EFTUD2 Monoclonal antibody



Catalog Number: **CL488-67855**

Basic Information

Catalog Number:

CL488-67855

Size:

100ul , Concentration: 1000 µg/ml by
Nanodrop;

Source:

Mouse

Isotype:

IgG1

Immunogen Catalog Number:

AG24345

GenBank Accession Number:

BC002360

GeneID (NCBI):

9343

UNIPROT ID:

Q15029

Full Name:

elongation factor Tu GTP binding
domain containing 2

Calculated MW:

116 kDa

Observed MW:

109-120 kDa

Purification Method:

Protein G purification

CloneNo.:

2F4G2

Excitation/Emission maxima
wavelengths:

493 nm / 522 nm

Applications

Tested Applications:

FC (Intra)

Species Specificity:

Human, mouse, rat

Storage

Storage:

Store at -20°C. Avoid exposure to light. Stable for one year after shipment.

Storage Buffer:

PBS with 50% Glycerol, 0.05% Proclin300, 0.5% BSA, pH 7.3.

Aliquoting is unnecessary for -20°C storage

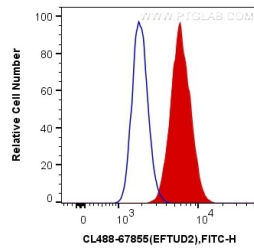
For technical support and original validation data for this product please contact:

T: 1 (888) 4PTGLAB (1-888-478-4522) (toll free
in USA), or 1(312) 455-8498 (outside USA)

E: proteintech@ptglab.com
W: ptglab.com

This product is exclusively available under Proteintech
Group brand and is not available to purchase from any
other manufacturer.

Selected Validation Data



1X10⁶ HepG2 cells were intracellularly stained with 0.4 ug CoraLite® Plus 488 Anti-Human EFTUD2 (CL488-67855, Clone:2F4G2) (red), or 0.4 ug Control Antibody. Cells were fixed with 4% PFA and permeabilized with Flow Cytometry Perm Buffer (PF00011-C).