

For Research Use Only

CoraLite® Plus 488-conjugated GIT2 Monoclonal antibody

Catalog Number: CL488-67858



Basic Information

Catalog Number:

CL488-67858

Size:

100ul , Concentration: 1000 ug/ml by Nanodrop;

Source:

Mouse

Isotype:

IgG1

Immunogen Catalog Number:

AG0321

GenBank Accession Number:

BC001379

GeneID (NCBI):

9815

UNIPROT ID:

Q14161

Full Name:

G protein-coupled receptor kinase interacting ArfGAP 2

Calculated MW:

95 kDa

Observed MW:

70-85 kDa

Purification Method:

Protein G purification

CloneNo.:

2D9C5

Excitation/Emission maxima wavelengths:

493 nm / 522 nm

Applications

Tested Applications:

FC (Intra)

Species Specificity:

Human, rat

Storage

Storage:

Store at -20°C. Avoid exposure to light. Stable for one year after shipment.

Storage Buffer:

PBS with 50% Glycerol, 0.05% Proclin300, 0.5% BSA, pH 7.3.

Aliquoting is unnecessary for -20°C storage

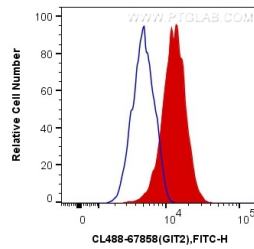
For technical support and original validation data for this product please contact:

T: 1 (888) 4PTGLAB (1-888-478-4522) (toll free in USA), or 1(312) 455-8498 (outside USA)

E: proteintech@ptglab.com
W: ptglab.com

This product is exclusively available under Proteintech Group brand and is not available to purchase from any other manufacturer.

Selected Validation Data



1X10⁶ HeLa cells were intracellularly stained with 0.4 ug CoraLite® Plus 488 Anti-Human GIT2 (CL488-67858, Clone:2D9C5) (red), or 0.4 ug Control Antibody. Cells were fixed with 4% PFA and permeabilized with Flow Cytometry Perm Buffer (PF00011-C).