

For Research Use Only

CoraLite® Plus 488-conjugated CBS Monoclonal antibody



Catalog Number:CL488-67861

Basic Information

| | | |
|---|--|---|
| Catalog Number: CL488-67861 | GenBank Accession Number: BC000440 | Purification Method: Protein A purification |
| Size: 100ul , Concentration: 1000 µg/ml by Nanodrop; | GeneID (NCBI): 875 | CloneNo.: 1E4F10 |
| Source: Mouse | Full Name: cystathionine-beta-synthase | Excitation/Emission maxima wavelengths: 488 nm / 515 nm |
| Isotype: IgG2b | Calculated MW: 61 kDa | |
| Immunogen Catalog Number: AG7008 | Observed MW: 61-63 kDa | |

Applications

Tested Applications:
FC (Intra)

Species Specificity:
Human, rat

Background Information

The CBS gene encodes cystathionine beta-synthase, which catalyzes the first irreversible step of transsulfuration. The CBS enzyme is a homotetramer of 63-kD subunits and requires pyridoxal phosphate and heme for activity(PMID:11230183). CBS protein is localized in most areas of the brain, but predominantly in the cell bodies and neuronal processes of Purkinje cells and Ammon's horn neurons(PMID:12588964).

Storage

Storage:
Store at -20°C. Avoid exposure to light. Stable for one year after shipment.

Storage Buffer:
PBS with 50% Glycerol, 0.05% Proclin300, 0.5% BSA, pH 7.3.

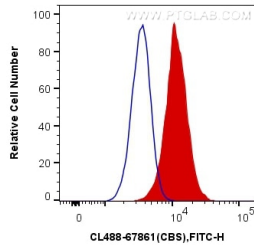
Aliquoting is unnecessary for -20°C storage

*** 20ul sizes contain 0.1% BSA

For technical support and original validation data for this product please contact:
T: 1 (888) 4PTGLAB (1-888-478-4522) (toll free in USA), or 1(312) 455-8498 (outside USA) E: proteintech@ptglab.com W: ptglab.com

This product is exclusively available under Proteintech Group brand and is not available to purchase from any other manufacturer.

Selected Validation Data



1X10⁶ HeLa cells were intracellularly stained with 0.4 ug CoraLite® Plus 488 Anti-Human CBS (CL488-67861, Clone:1E4F10) (red), or 0.4 ug Mouse IgG2b Isotype Control (CL488-66360-3, Clone: K11B8C4B5) (blue). Cells were fixed with 4% PFA and permeabilized with Flow Cytometry Perm Buffer (PF00011-C).