

For Research Use Only

# CoraLite® Plus 488-conjugated GEMIN8 Monoclonal antibody



Catalog Number:CL488-67871

## Basic Information

<b>Catalog Number:</b> CL488-67871	<b>GenBank Accession Number:</b> BC003607	<b>Purification Method:</b> Protein G purification
<b>Size:</b> 100ul , Concentration: 1000 µg/ml by Nanodrop;	<b>GeneID (NCBI):</b> 54960	<b>CloneNo.:</b> 1A6B4
<b>Source:</b> Mouse	<b>Full Name:</b> gem (nuclear organelle) associated protein 8	<b>Recommended Dilutions:</b> IF 1:50-1:500
<b>Isotype:</b> IgG1	<b>Calculated MW:</b> 29 kDa	
<b>Immunogen Catalog Number:</b> AG6774		

## Applications

<b>Tested Applications:</b> IF	<b>Positive Controls:</b> IF : HepG2 cells,
<b>Species Specificity:</b> Human, mouse, rat	

## Background Information

GEMIN8, also named as FAM51A1 and Gemin-8, is associated with the SMN complex and is localized in the cytoplasm and in the nucleus, where it is highly concentrated in Gems. Gemin6, Gemin7, and Unrip form a stable cytoplasmic complex whose association with SMN requires Gemin8. Gemin8 binds directly to SMN and mediates its interaction with the Gemin6/Gemin7 heterodimer. This antibody recognize GEMIN8(28-32kd) only.

## Storage

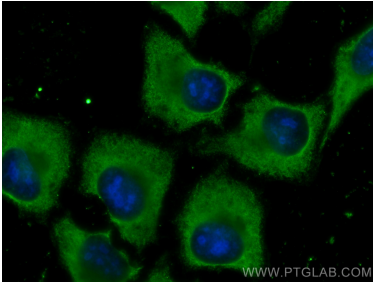
**Storage:**  
Store at -20°C. Avoid exposure to light. Stable for one year after shipment.  
**Storage Buffer:**  
PBS with 50% Glycerol, 0.05% Proclin300, 0.5% BSA, pH 7.3.  
Aliquoting is unnecessary for -20°C storage

\*\*\* 20ul sizes contain 0.1% BSA

For technical support and original validation data for this product please contact:  
T: 1 (888) 4PTGLAB (1-888-478-4522) (toll free in USA), or 1(312) 455-8498 (outside USA)  
E: proteintech@ptglab.com  
W: ptglab.com

This product is exclusively available under Proteintech Group brand and is not available to purchase from any other manufacturer.

## Selected Validation Data



Immunofluorescent analysis of (-20°C Ethanol) fixed HepG2 cells using CoraLite® Plus 488 GEMIN8 antibody (CL488-67871, Clone: 1A6B4 ) at dilution of 1:200.