

For Research Use Only

CoraLite® Plus 488-conjugated ARL8B Monoclonal antibody



Catalog Number:CL488-67891

Basic Information

Catalog Number: CL488-67891	GenBank Accession Number: BC013131	Purification Method: Protein A purification
Size: 100ul , Concentration: 1000 µg/ml by Nanodrop;	GeneID (NCBI): 55207	CloneNo.: 2G10E2
Source: Mouse	Full Name: ADP-ribosylation factor-like 8B	Excitation/Emission maxima wavelengths: 488 nm / 515 nm
Isotype: IgG2a	Calculated MW: 186 aa, 22 kDa	
Immunogen Catalog Number: AG3711	Observed MW: 22 kDa	

Applications

Tested Applications:
FC (Intra)

Species Specificity:
Human, mouse, rat, pig

Background Information

ARL8B (ADP-ribosylation factor-like 8B) , also known as ARL10C or GIE1, is a small GTPase of the Arl-family, that is associated with the lysosome. ARL8A interacts with Tubulin, and plays a role in lysosome motility, as well as in chromosomal segregation. ARL8B plays a role in the spatial distribution and positioning of lysosomes. ARL8B is regarded as a regulator of endosome to lysosome trafficking pathways of special significance for host defense.

Storage

Storage:
Store at -20°C. Avoid exposure to light. Stable for one year after shipment.

Storage Buffer:
PBS with 50% Glycerol, 0.05% Proclin300, 0.5% BSA, pH 7.3.

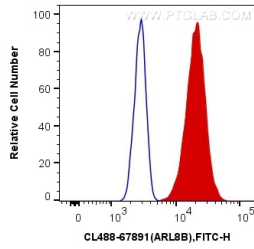
Aliquoting is unnecessary for -20°C storage

*** 20ul sizes contain 0.1% BSA

For technical support and original validation data for this product please contact:
T: 1 (888) 4PTGLAB (1-888-478-4522) (toll free in USA), or 1(312) 455-8498 (outside USA) E: proteintech@ptglab.com W: ptglab.com

This product is exclusively available under Proteintech Group brand and is not available to purchase from any other manufacturer.

Selected Validation Data



1X10⁶ HeLa cells were intracellularly stained with 0.4 ug CoraLite® Plus 488 Anti-Human ARL8B (CL488-67891, Clone:2G10E2) (red), or 0.4 ug Mouse IgG2a Isotype Control (CL488-66360-2, Clone: K11A1B2A2) (blue). Cells were fixed with 4% PFA and permeabilized with Flow Cytometry Perm Buffer (PF00011-C).