

For Research Use Only

CoraLite® Plus 488-conjugated KPNA3 Monoclonal antibody



Catalog Number:CL488-67892

Basic Information

Catalog Number: CL488-67892	GenBank Accession Number: BC017355	Purification Method: Protein A purification
Size: 100ul , Concentration: 1000 µg/ml by Nanodrop;	GeneID (NCBI): 3839	CloneNo.: 1D3D2
Source: Mouse	Full Name: karyopherin alpha 3 (importin alpha 4)	Recommended Dilutions: IF 1:50-1:500
Isotype: IgG2a	Calculated MW: 58 kDa	
Immunogen Catalog Number: AG27767	Observed MW: 58 kDa	

Applications

Tested Applications: IF	Positive Controls: IF : HepG2 cells,
Species Specificity: Human, rat, mouse	

Background Information

karyopherin subunit alpha 3 (KPNA3) is a member of the importin alpha family which can transport molecules between the nucleus and cytoplasm. It is ubiquitous expressed in brain, testis and esophagus. KPNA3 is associated with many severe diseases such as hepatocellular Carcinoma (PMID: 31417635) , schizophrenia, major depression and opiate dependence (PMID: 22960338) . The molecular weight of KPNA3 is about 58 kDa.

Storage

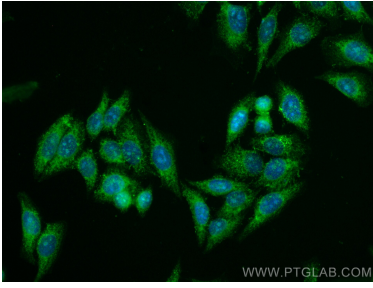
Storage:
Store at -20°C. Avoid exposure to light. Stable for one year after shipment.
Storage Buffer:
PBS with 50% Glycerol, 0.05% Proclin300, 0.5% BSA, pH 7.3.
Aliquoting is unnecessary for -20°C storage

*** 20ul sizes contain 0.1% BSA

For technical support and original validation data for this product please contact:
T: 1 (888) 4PTGLAB (1-888-478-4522) (toll free in USA), or 1(312) 455-8498 (outside USA)
E: proteintech@ptglab.com
W: ptglab.com

This product is exclusively available under Proteintech Group brand and is not available to purchase from any other manufacturer.

Selected Validation Data



Immunofluorescent analysis of (-20°C Methanol) fixed HepG2 cells using CoraLite® Plus 488 KPNA3 antibody (CL488-67892, Clone: 1D3D2) at dilution of 1:200.