

For Research Use Only

CoraLite® Plus 488-conjugated CIB1 Monoclonal antibody



Catalog Number: CL488-67901

Basic Information

Catalog Number: CL488-67901	GenBank Accession Number: BC000846	Purification Method: Protein A purification
Size: 100ul , Concentration: 1000 µg/ml by Nanodrop;	GeneID (NCBI): 10519	CloneNo.: 1D2C12
Source: Mouse	Full Name: calcium and integrin binding 1 (calmyrin)	Excitation/Emission maxima wavelengths: 488 nm / 515 nm
Isotype: IgG2b	Calculated MW: 22 kDa	
Immunogen Catalog Number: AG31174	Observed MW: 22 kDa	

Applications

Tested Applications:
FC (Intra)

Species Specificity:
Human, mouse, rat, bovine

Background Information

Storage

Storage:
Store at -20°C. Avoid exposure to light. Stable for one year after shipment.

Storage Buffer:
PBS with 50% Glycerol, 0.05% Proclin300, 0.5% BSA, pH 7.3.

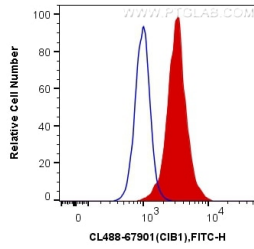
Aliquoting is unnecessary for -20°C storage

*** 20ul sizes contain 0.1% BSA

For technical support and original validation data for this product please contact:
T: 1 (888) 4PTGLAB (1-888-478-4522) (toll free in USA), or 1(312) 455-8498 (outside USA)
E: proteintech@ptglab.com
W: ptglab.com

This product is exclusively available under Proteintech Group brand and is not available to purchase from any other manufacturer.

Selected Validation Data



1X10⁶ Jurkat cells were intracellularly stained with 0.4 ug CoraLite® Plus 488 Anti-Human CIB1 (CL488-67901, Clone:1D2C12) (red), or 0.4 ug Mouse IgG2b Isotype Control (CL488-66360-3, Clone: K11B8C4B5) (blue). Cells were fixed with 4% PFA and permeabilized with Flow Cytometry Perm Buffer (PF00011-C).