

For Research Use Only

# CoraLite® Plus 488-conjugated TRAPA/SSR1 Monoclonal antibody

Catalog Number:CL488-67925



## Basic Information

<b>Catalog Number:</b> CL488-67925	<b>GenBank Accession Number:</b> BC007710	<b>Purification Method:</b> Protein G purification
<b>Size:</b> 100ul , Concentration: 1000 ug/ml by Nanodrop;	<b>GeneID (NCBI):</b> 6745	<b>CloneNo.:</b> 1F2D7
<b>Source:</b> Mouse	<b>UNIPROT ID:</b> P43307	<b>Recommended Dilutions:</b> IF-P 1:50-1:500
<b>Isotype:</b> IgG1	<b>Full Name:</b> signal sequence receptor, alpha	<b>Excitation/Emission maxima wavelengths:</b> 493 nm / 522 nm
<b>Immunogen Catalog Number:</b> AG30832	<b>Calculated MW:</b> 34 kDa	
	<b>Observed MW:</b> 34 kDa	

## Applications

<b>Tested Applications:</b> IF-P	<b>Positive Controls:</b> IF-P : human ovary tumor tissue,
<b>Species Specificity:</b> Human	

## Background Information

TRAPA (translocon-associated protein subunit alpha), also known as SSR1 (signal sequence receptor subunit alpha), is a 34-kDa single-spanning membrane glycoprotein of the endoplasmic reticulum (ER) (PMID: 8050590). It is a part of the tetrameric TRAP complex (TRAP-alpha, TRAP-beta, TRAP-delta and TRAP-gamma) which functions in regulating the retention of ER resident proteins (PMID: 7916687). The TRAP complex is also involved in endoplasmic reticulum-associated degradation (ERAD) (PMID: 17380188).

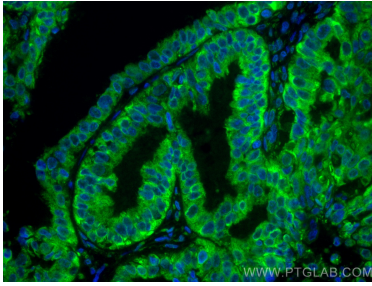
## Storage

**Storage:**  
Store at -20°C. Avoid exposure to light. Stable for one year after shipment.  
**Storage Buffer:**  
PBS with 50% Glycerol, 0.05% Proclin300, 0.5% BSA, pH 7.3.  
Aliquoting is unnecessary for -20°C storage

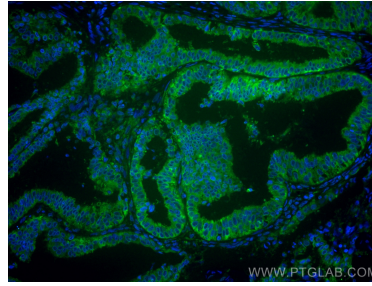
For technical support and original validation data for this product please contact:  
T: 1 (888) 4PTGLAB (1-888-478-4522) (toll free in USA), or 1(312) 455-8498 (outside USA)  
E: [proteintech@ptglab.com](mailto:proteintech@ptglab.com)  
W: [ptglab.com](http://ptglab.com)

This product is exclusively available under Proteintech Group brand and is not available to purchase from any other manufacturer.

## Selected Validation Data



Immunofluorescent analysis of (4% PFA) fixed human ovary tumor tissue using Coralite® Plus 488 TRAPA/SSR1 antibody (CL488-67925, Clone: 1F2D7 ) at dilution of 1:200.



Immunofluorescent analysis of (4% PFA) fixed human ovary tumor tissue using Coralite® Plus 488 TRAPA/SSR1 antibody (CL488-67925, Clone: 1F2D7 ) at dilution of 1:200.