

For Research Use Only

# CoraLite® Plus 488-conjugated SLC36A3 Monoclonal antibody

Catalog Number: CL488-67929



## Basic Information

### Catalog Number:

CL488-67929

### Size:

100ul , Concentration: 1000 ug/ml by  
Nanodrop;

### Source:

Mouse

### Isotype:

IgG1

### Immunogen Catalog Number:

AG16556

### GenBank Accession Number:

BC101092

### GeneID (NCBI):

285641

### UNIPROT ID:

Q495N2

### Full Name:

solute carrier family 36  
(proton/amino acid symporter),  
member 3

### Calculated MW:

511 aa, 56 kDa

### Observed MW:

51 kDa

### Purification Method:

Protein G purification

### CloneNo.:

1A8E6

### Recommended Dilutions:

IF-P 1:50-1:500

### Excitation/Emission maxima wavelengths:

493 nm / 522 nm

## Applications

### Tested Applications:

IF-P

### Species Specificity:

Human, Mouse

### Positive Controls:

IF-P : mouse testis tissue,

## Storage

### Storage:

Store at -20°C. Avoid exposure to light. Stable for one year after shipment.

### Storage Buffer:

PBS with 50% Glycerol, 0.05% Proclin300, 0.5% BSA, pH 7.3.

Aliquoting is unnecessary for -20°C storage

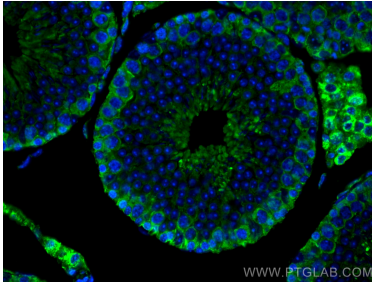
For technical support and original validation data for this product please contact:

T: 1 (888) 4PTGLAB (1-888-478-4522) (toll free  
in USA), or 1(312) 455-8498 (outside USA)

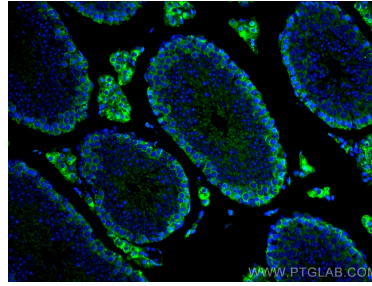
E: [proteintech@ptglab.com](mailto:proteintech@ptglab.com)  
W: [ptglab.com](http://ptglab.com)

This product is exclusively available under Proteintech  
Group brand and is not available to purchase from any  
other manufacturer.

## Selected Validation Data



Immunofluorescent analysis of (4% PFA) fixed mouse testis tissue using CoraLite® Plus 488 SLC36A3 antibody (CL488-67929, Clone: 1A8E6 ) at dilution of 1:200.



Immunofluorescent analysis of (4% PFA) fixed mouse testis tissue using CoraLite® Plus 488 SLC36A3 antibody (CL488-67929, Clone: 1A8E6 ) at dilution of 1:200.