

For Research Use Only

# CoraLite® Plus 488-conjugated SETD1A Monoclonal antibody



Catalog Number:CL488-67936

## Basic Information

<b>Catalog Number:</b> CL488-67936	<b>GenBank Accession Number:</b> NM_014712	<b>Purification Method:</b> Protein G purification
<b>Size:</b> 100ul , Concentration: 1000 µg/ml by Nanodrop;	<b>GeneID (NCBI):</b> 9739	<b>CloneNo.:</b> 1C2G12
<b>Source:</b> Mouse	<b>Full Name:</b> SET domain containing 1A	<b>Excitation/Emission maxima wavelengths:</b> 488 nm / 515 nm
<b>Isotype:</b> IgG1	<b>Calculated MW:</b> 186 kDa	
<b>Immunogen Catalog Number:</b> AG30424	<b>Observed MW:</b> 270 kDa	

## Applications

**Tested Applications:**  
FC (Intra)

**Species Specificity:**  
Human, mouse, rat

## Background Information

SETD1A is a SET domain-containing methyltransferase involved in the epigenetic regulation of transcription(PMID:12670868). It is the main catalytic component of a multiprotein complex that methylates lysine 4 of histone H3, a histone mark associated with gene activation (PMID:29937342). Responsible for H3K4me3 enriched promoters and transcriptional programming of inner mass stem cells and neuron progenitors during embryogenesis (PMID:31197650). Does not methylate 'Lys-4' of histone H3 if the neighboring 'Lys-9' residue is already methylated (PubMed:12670868). SETD1A has a calculated molecular weight of 186 kDa, and a 258 kDa band was also reported (PMID: 31076518).

## Storage

**Storage:**  
Store at -20°C. Avoid exposure to light. Stable for one year after shipment.

**Storage Buffer:**  
PBS with 50% Glycerol, 0.05% Proclin300, 0.5% BSA, pH 7.3.

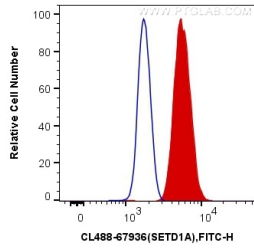
Aliquoting is unnecessary for -20°C storage

\*\*\* 20ul sizes contain 0.1% BSA

For technical support and original validation data for this product please contact:  
T: 1 (888) 4PTGLAB (1-888-478-4522) (toll free in USA), or 1(312) 455-8498 (outside USA) E: proteintech@ptglab.com W: ptglab.com

This product is exclusively available under Proteintech Group brand and is not available to purchase from any other manufacturer.

## Selected Validation Data



1X10<sup>6</sup> HEK-293 cells were intracellularly stained with 0.4 ug CoraLite® Plus 488 Anti-Human SETD1A (CL488-67936, Clone:1C2G12) (red), or 0.4 ug Control Antibody. Cells were fixed and permeabilized with Transcription Factor Staining Buffer Kit (PF00011).