

For Research Use Only

# CoraLite® Plus 488-conjugated PARC Monoclonal antibody

Catalog Number:CL488-67946



## Basic Information

Catalog Number:

CL488-67946

Size:

100ul , Concentration: 1000 ug/ml by

Nanodrop;

Source:

Mouse

Isotype:

IgG2b

Immunogen Catalog Number:

AG27288

GenBank Accession Number:

BC052966

GeneID (NCBI):

8505

UNIPROT ID:

Q86W56

Full Name:

poly (ADP-ribose) glycohydrolase

Calculated MW:

111 kDa

Observed MW:

111 kDa

Purification Method:

Protein A purification

CloneNo.:

1H10G10

Recommended Dilutions:

IF/ICC 1:50-1:500

Excitation/Emission maxima

wavelengths:

493 nm / 522 nm

## Applications

Tested Applications:

IF/ICC, FC (Intra)

Species Specificity:

human

Positive Controls:

IF/ICC : A431 cells,

## Storage

Storage:

Store at -20°C. Avoid exposure to light. Stable for one year after shipment.

Storage Buffer:

PBS with 50% Glycerol, 0.05% Proclin300, 0.5% BSA, pH 7.3.

Aliquoting is unnecessary for -20°C storage

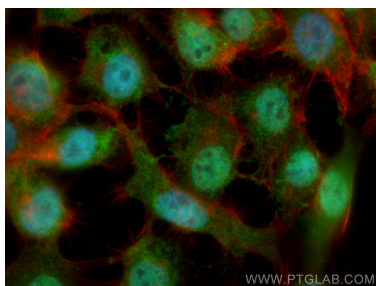
For technical support and original validation data for this product please contact:

T: 1 (888) 4PTGLAB (1-888-478-4522) (toll free  
in USA), or 1(312) 455-8498 (outside USA)

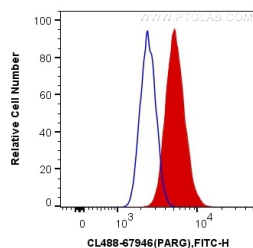
E: [proteintech@ptglab.com](mailto:proteintech@ptglab.com)  
W: [ptglab.com](http://ptglab.com)

This product is exclusively available under Proteintech  
Group brand and is not available to purchase from any  
other manufacturer.

## Selected Validation Data



Immunofluorescent analysis of (4% PFA) fixed A431 cells using Coralite® Plus 488 PARG antibody (CL488-67946, Clone: 1H10G10) at dilution of 1:200, CL594-Phalloidin (red).



$1 \times 10^6$  A431 cells were intracellularly stained with 0.4  $\mu$ g Coralite® Plus 488 Anti-Human PARG (CL488-67946, Clone: 1H10G10) (red), or 0.4  $\mu$ g Mouse IgG2b Isotype Control (CL488-66360-3, Clone: K11B8C4B5) (blue). Cells were fixed with 4% PFA and permeabilized with Flow Cytometry Perm Buffer (PF00011-C).