

For Research Use Only

CoraLite® Plus 488-conjugated PSMB5 Monoclonal antibody



Catalog Number: CL488-67959

Basic Information

Catalog Number: CL488-67959	GenBank Accession Number: BC057840	Purification Method: Protein A purification
Size: 100ul , Concentration: 1000 µg/ml by Nanodrop;	GeneID (NCBI): 5693	CloneNo.: 2E9H1
Source: Mouse	Full Name: proteasome (prosome, macropain) subunit, beta type, 5	Excitation/Emission maxima wavelengths: 493 nm / 522 nm
Isotype: IgG2a	Calculated MW: 263 aa, 28 kDa	
Immunogen Catalog Number: AG5828	Observed MW: 22 kDa	

Applications

Tested Applications:
FC (Intra)

Species Specificity:
Human

Background Information

PSMB5 (Proteasome subunit beta type-5) is also named as LMPX, MB1, X and belongs to the peptidase T1B family. The proteasome is a multicatalytic proteinase complex which is characterized by its ability to cleave peptides with Arg, Phe, Tyr, Leu, and Glu adjacent to the leaving group at neutral or slightly basic pH. RNAi-mediated silencing of it has 2 isoforms produced by alternative splicing.

Storage

Storage:
Store at -20°C. Avoid exposure to light. Stable for one year after shipment.

Storage Buffer:
PBS with 50% Glycerol, 0.05% Proclin300, 0.5% BSA, pH 7.3.

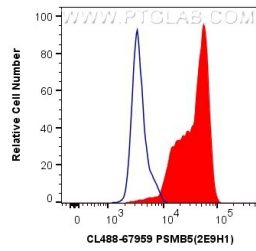
Aliquoting is unnecessary for -20°C storage

*** 20ul sizes contain 0.1% BSA

For technical support and original validation data for this product please contact:
T: 1 (888) 4PTGLAB (1-888-478-4522) (toll free in USA), or 1(312) 455-8498 (outside USA) E: proteintech@ptglab.com W: ptglab.com

This product is exclusively available under Proteintech Group brand and is not available to purchase from any other manufacturer.

Selected Validation Data



1X10⁶ HeLa cells were intracellularly stained with 0.4 ug CoraLite® Plus 488 Anti-Human PSMB5 (CL488-67959, Clone:2E9H1) (red), or 0.4 ug Mouse IgG2a Isotype Control (CL488-66360-2, Clone: K11A1B2A2) (blue). Cells were fixed and permeabilized with Transcription Factor Staining Buffer Kit (PF00011).