

For Research Use Only

# CoraLite® Plus 488-conjugated CCT6B Monoclonal antibody

Catalog Number: CL488-67961



## Basic Information

|  |  |   |
|--|--|---|
| <b>Catalog Number:</b><br>CL488-67961                          | <b>GenBank Accession Number:</b><br>BC027591                         | <b>Purification Method:</b><br>Protein G purification             |
| <b>Size:</b><br>100ul , Concentration: 1000 ug/ml by Nanodrop; | <b>GeneID (NCBI):</b><br>10693                                       | <b>CloneNo.:</b><br>2F11A9  |
| <b>Source:</b><br>Mouse  | <b>UNIPROT ID:</b><br>Q92526   | <b>Excitation/Emission maxima wavelengths:</b><br>493 nm / 522 nm |
| <b>Isotype:</b><br>IgG1  | <b>Full Name:</b><br>chaperonin containing TCP1, subunit 6B (zeta 2) |   |
| <b>Immunogen Catalog Number:</b><br>AG31295                    | <b>Calculated MW:</b><br>530 aa, 58 kDa                              |   |
|  | <b>Observed MW:</b><br>53-58 kDa                                     |   |

## Applications

**Tested Applications:**  
FC (Intra)

**Species Specificity:**  
Human, Mouse, Rat

## Background Information

CCT6B, also named as CCT-zeta-2, TCP-1-zeta-like, CCT-zeta-like, Testis-specific Tcp20 and Testis-specific protein TSA303, belongs to the TCP-1 chaperonin family. CCT6B is a molecular chaperone which assists the folding of proteins upon ATP hydrolysis. It is known to play a role, in vitro, in the folding of actin and tubulin. CCT6B has 3 isoforms with the molecular mass of 53-58 kDa.

## Storage

**Storage:**  
Store at -20°C. Avoid exposure to light. Stable for one year after shipment.

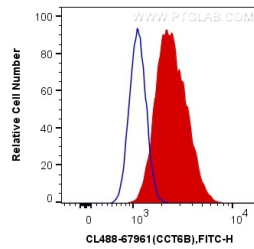
**Storage Buffer:**  
PBS with 50% Glycerol, 0.05% Proclin300, 0.5% BSA, pH 7.3.

**Aliquoting is unnecessary for -20°C storage**

For technical support and original validation data for this product please contact:  
T: 1 (888) 4PTGLAB (1-888-478-4522) (toll free in USA), or 1(312) 455-8498 (outside USA)  
E: [proteintech@ptglab.com](mailto:proteintech@ptglab.com)  
W: [ptglab.com](http://ptglab.com)

This product is exclusively available under Proteintech Group brand and is not available to purchase from any other manufacturer.

## Selected Validation Data



1X10<sup>6</sup> U2OS cells were intracellularly stained with 0.4 ug CoraLite® Plus 488 Anti-Human CCT6B (CL488-67961, Clone:2F11A9) (red), or 0.4 ug Control Antibody. Cells were fixed with 4% PFA and permeabilized with Flow Cytometry Perm Buffer (PF00011-C).