

For Research Use Only

# CoraLite® Plus 488-conjugated MFSD2 Monoclonal antibody



Catalog Number: CL488-67965

## Basic Information

<b>Catalog Number:</b> CL488-67965	<b>GenBank Accession Number:</b> BC092414	<b>Purification Method:</b> Protein A purification
<b>Size:</b> 100ul , Concentration: 1000 µg/ml by Nanodrop;	<b>GeneID (NCBI):</b> 84879	<b>CloneNo.:</b> 2D2B4
<b>Source:</b> Mouse	<b>Full Name:</b> major facilitator superfamily domain containing 2	<b>Recommended Dilutions:</b> IF 1:50-1:500
<b>Isotype:</b> IgG2a	<b>Calculated MW:</b> 543 aa, 60 kDa	<b>Excitation/Emission maxima wavelengths:</b> 493 nm / 522 nm
<b>Immunogen Catalog Number:</b> AG31028	<b>Observed MW:</b> 60 kDa	

## Applications

<b>Tested Applications:</b> IF	<b>Positive Controls:</b> IF : mouse brain tissue,
<b>Species Specificity:</b> Human, mouse	

## Background Information

MFSD2, also named as MFSD2A, belongs to a large family of presumptive carbohydrate transporters with 10-12 membrane-spanning domains, is located at chromosomal position 1p34.2, and is conserved in evolution. It plays a role in thermogenesis via beta-adrenergic signaling pathway. It may be the main plasma membrane tunicamycin transporter. MFSD2 has three isoforms with MW 50 kDa and 59-60 kDa.

## Storage

**Storage:**  
Store at -20°C. Avoid exposure to light. Stable for one year after shipment.  
**Storage Buffer:**  
PBS with 50% Glycerol, 0.05% Proclin300, 0.5% BSA, pH 7.3.  
Aliquoting is unnecessary for -20°C storage

\*\*\* 20ul sizes contain 0.1% BSA

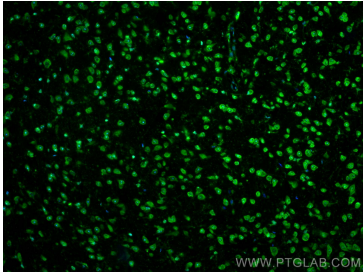
For technical support and original validation data for this product please contact:

T: 1 (888) 4PTGLAB (1-888-478-4522) (toll free  
in USA), or 1(312) 455-8498 (outside USA)

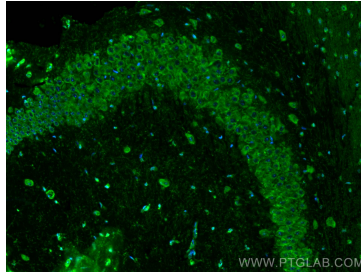
E: [proteintech@ptglab.com](mailto:proteintech@ptglab.com)  
W: [ptglab.com](http://ptglab.com)

This product is exclusively available under Proteintech Group brand and is not available to purchase from any other manufacturer.

## Selected Validation Data



Immunofluorescent analysis of (4% PFA) fixed mouse brain tissue using CoralLite® Plus 488 MFSD2 antibody (CL488-67965, Clone: 2D2B4 ) at dilution of 1:200.



Immunofluorescent analysis of (4% PFA) fixed mouse brain tissue using CoralLite® Plus 488 MFSD2 antibody (CL488-67965, Clone: 2D2B4 ) at dilution of 1:200.