

For Research Use Only

CoraLite® Plus 488-conjugated RPA1 Monoclonal antibody



Catalog Number: CL488-67973

Basic Information

| | | |
|---|--|---|
| Catalog Number: CL488-67973 | GenBank Accession Number: BC018126 | Purification Method: Protein G purification |
| Size: 100ul , Concentration: 1000 µg/ml by Nanodrop; | GeneID (NCBI): 6117 | CloneNo.: 1G3F11 |
| Source: Mouse | Full Name: replication protein A1, 70kDa | Excitation/Emission maxima wavelengths: 488 nm / 515 nm |
| Isotype: IgG1 | Calculated MW: 616 aa, 68 kDa | |
| Immunogen Catalog Number: AG28239 | Observed MW: 68 kDa | |

Applications

Tested Applications:
FC (Intra)

Species Specificity:
Human, Rat

Background Information

Storage

Storage:
Store at -20°C. Avoid exposure to light. Stable for one year after shipment.

Storage Buffer:
PBS with 50% Glycerol, 0.05% Proclin300, 0.5% BSA, pH 7.3.

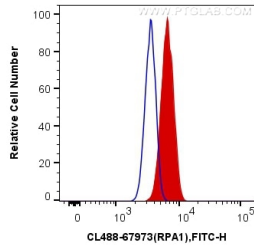
Aliquoting is unnecessary for -20°C storage

*** 20ul sizes contain 0.1% BSA

For technical support and original validation data for this product please contact:
T: 1 (888) 4PTGLAB (1-888-478-4522) (toll free in USA), or 1(312) 455-8498 (outside USA)
E: proteintech@ptglab.com
W: ptglab.com

This product is exclusively available under Proteintech Group brand and is not available to purchase from any other manufacturer.

Selected Validation Data



1X10⁶ HeLa cells were intracellularly stained with 0.4 ug CoraLite® Plus 488 Anti-Human RPA1 (CL488-67973, Clone:1G3F11) (red), or 0.4 ug Control Antibody. Cells were fixed and permeabilized with Transcription Factor Staining Buffer Kit (PF00011).