

# CoraLite® Plus 488-conjugated GPHN Monoclonal antibody

Catalog Number: **CL488-67995**

## Basic Information

**Catalog Number:**

CL488-67995

**GenBank Accession Number:**

BC030016

**Size:**100ul , Concentration: 1000 µg/ml by  
Nanodrop;**GeneID (NCBI):**

10243

**Source:**

Mouse

**UNIPROT ID:**

Q9NQX3

**Isotype:**

IgG1

**Full Name:**

gephyrin

**Immunogen Catalog Number:**

AG23708

**Calculated MW:**

769 aa, 83 kDa

**Observed MW:**

93 kDa

**Purification Method:**

Protein G purification

**CloneNo.:**

1D7C4

**Excitation/Emission maxima  
wavelengths:**

493 nm / 522 nm

## Applications

**Tested Applications:**

FC (Intra)

**Species Specificity:**

Human

## Background Information

Gephyrin (GPHN) is an organizational protein that clusters and localizes the inhibitory glycine receptor (GlyR) and GABAA receptors to the microtubular matrix of the neuronal postsynaptic membrane. Mice deficient in gephyrin develop a hereditary molybdenum cofactor deficiency and a neurological phenotype that mimics startle disease (hyperekplexia). In non-neuronal tissues, the encoded protein is also required for molybdenum cofactor biosynthesis. Two isoforms produced by alternative splicing have been described. The observed MW of Gephyrin is 93 kDa, larger than the predicted of 83 kDa, which may be due to the modifications on various phosphorylation sites.

## Storage

**Storage:**

Store at -20°C. Avoid exposure to light. Stable for one year after shipment.

**Storage Buffer:**

PBS with 50% Glycerol, 0.05% Proclin300, 0.5% BSA, pH 7.3.

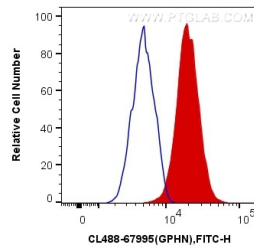
Aliquoting is unnecessary for -20°C storage

For technical support and original validation data for this product please contact:

T: 1 (888) 4PTGLAB (1-888-478-4522) (toll free  
in USA), or 1(312) 455-8498 (outside USA)E: [proteintech@ptglab.com](mailto:proteintech@ptglab.com)  
W: [ptglab.com](http://ptglab.com)

This product is exclusively available under Proteintech  
Group brand and is not available to purchase from any  
other manufacturer.

## Selected Validation Data



1X10<sup>6</sup> HeLa cells were intracellularly stained with 0.4 ug CoraLite® Plus 488 Anti-Human GPHN (CL488-67995, Clone:1D7C4) (red), or 0.4 ug Control Antibody. Cells were fixed with 4% PFA and permeabilized with Flow Cytometry Perm Buffer (PF00011-C).