

For Research Use Only

# CoraLite® Plus 488-conjugated RALY Monoclonal antibody



Catalog Number:CL488-68011

## Basic Information

<b>Catalog Number:</b> CL488-68011	<b>GenBank Accession Number:</b> BC103753	<b>Purification Method:</b> Protein G purification
<b>Size:</b> 100ul , Concentration: 1000 µg/ml by Nanodrop;	<b>GeneID (NCBI):</b> 22913	<b>CloneNo.:</b> 2B10C3
<b>Source:</b> Mouse	<b>Full Name:</b> RNA binding protein, autoantigenic (hnRNP-associated with lethal yellow homolog (mouse))	<b>Recommended Dilutions:</b> IF 1:300-1:1200
<b>Isotype:</b> IgG1	<b>Calculated MW:</b> 307 aa, 33 kDa	<b>Excitation/Emission maxima wavelengths:</b> 493 nm / 522 nm
<b>Immunogen Catalog Number:</b> AG12250	<b>Observed MW:</b> 37 kDa	

## Applications

<b>Tested Applications:</b> FC (Intra), IF	<b>Positive Controls:</b> IF : A431 cells,
<b>Species Specificity:</b> Human	

## Background Information

RNA-binding protein RALY is a protein that in humans is encoded by the RALY gene. In infectious mononucleosis, anti-EBNA-1 antibodies are produced which cross-react with multiple normal human proteins. The cross-reactivity is due to anti-gly/ala antibodies that cross-react with host proteins containing configurations like those in the EBNA-1 repeat. One such antigen is RALY which is a member of the heterogeneous nuclear ribonucleoprotein gene family.

## Storage

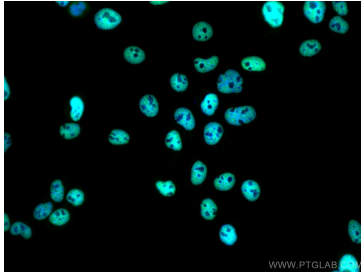
**Storage:**  
Store at -20°C. Avoid exposure to light. Stable for one year after shipment.  
**Storage Buffer:**  
PBS with 50% Glycerol, 0.05% Proclin300, 0.5% BSA, pH 7.3.  
Aliquoting is unnecessary for -20°C storage

**\*\*\* 20ul sizes contain 0.1% BSA**

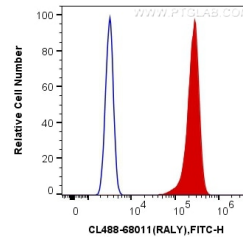
For technical support and original validation data for this product please contact:  
T: 1 (888) 4PTGLAB (1-888-478-4522) (toll free in USA), or 1(312) 455-8498 (outside USA)  
E: proteintech@ptglab.com  
W: ptglab.com

This product is exclusively available under Proteintech Group brand and is not available to purchase from any other manufacturer.

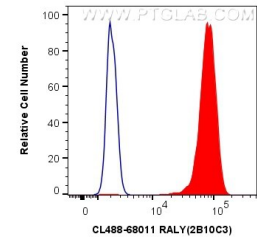
## Selected Validation Data



Immunofluorescent analysis of (4% PFA) fixed A431 cells using CoralLite® Plus 488 RALY antibody (CL488-68011, Clone: 2B10C3) at dilution of 1:600.



1X10<sup>6</sup> A431 cells were intracellularly stained with 0.4 ug CoralLite® Plus 488 Anti-Human RALY (CL488-68011, Clone:2B10C3) (red), or 0.4 ug Control Antibody. Cells were fixed and permeabilized with Transcription Factor Staining Buffer Kit (PF00011).



1X10<sup>6</sup> A431 cells were intracellularly stained with 0.4 ug CoralLite® Plus 488 Anti-Human RALY (CL488-68011, Clone:2B10C3) (red), or 0.4 ug CoralLite® Plus 488 Mouse IgG1 Isotype Control (MOPC-21) (CL488-65124, Clone: MOPC-21) (blue). Cells were fixed and permeabilized with Transcription Factor Staining Buffer Kit (PF00011).