

For Research Use Only

# CoraLite® Plus 488-conjugated SLC39A3 Monoclonal antibody

Catalog Number: CL488-68025



## Basic Information

### Catalog Number:

CL488-68025

### Size:

100ul , Concentration: 1000 ug/ml by Nanodrop;

### Source:

Mouse

### Isotype:

IgG2a

### Immunogen Catalog Number:

AG14289

### GenBank Accession Number:

BC005869

### GeneID (NCBI):

29985

### UNIPROT ID:

Q9BRYO

### Full Name:

solute carrier family 39 (zinc transporter), member 3

### Calculated MW:

314 aa, 34 kDa

### Observed MW:

32 kDa

### Purification Method:

Protein A purification

### CloneNo.:

1A11F6

### Excitation/Emission maxima wavelengths:

493 nm / 522 nm

## Applications

### Tested Applications:

FC (Intra)

### Species Specificity:

Human

## Background Information

SLC39A3, also named as ZIP3, belongs to the ZIP transporter (TC 2.A.5) family. SLC39A3 is a Zn importer that acts as a zinc-influx transporter. SLC39A3 is highly expressed in a cell-type-specific manner in ovaries, testes, and the developing nervous system with limited expression in the small intestinal crypt cells, kidney glomerulus, and discrete regions of the liver. SLC39A3 is also expressed in highly specialized, hormonally responsive secretory tissues, such as the pancreas, prostate, and mammary gland (PMID: 19458277). SLC39A3 has 2 isoforms with the molecular mass of 11 and 34 kDa.

## Storage

### Storage:

Store at -20°C. Avoid exposure to light. Stable for one year after shipment.

### Storage Buffer:

PBS with 50% Glycerol, 0.05% Proclin300, 0.5% BSA, pH 7.3.

Aliquoting is unnecessary for -20°C storage

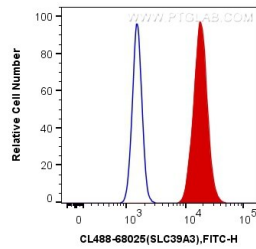
For technical support and original validation data for this product please contact:

T: 1 (888) 4PTGLAB (1-888-478-4522) (toll free in USA), or 1(312) 455-8498 (outside USA)

E: [proteintech@ptglab.com](mailto:proteintech@ptglab.com)  
W: [ptglab.com](http://ptglab.com)

This product is exclusively available under Proteintech Group brand and is not available to purchase from any other manufacturer.

## Selected Validation Data



1X10<sup>6</sup> A431 cells were intracellularly stained with 0.4 ug CoraLite® Plus 488 Anti-Human SLC39A3 (CL488-68025, Clone:1A11F6) (red), or 0.4 ug Mouse IgG2a Isotype Control (CL488-66360-2, Clone: K11A1B2A2) (blue). Cells were fixed with 4% PFA and permeabilized with Flow Cytometry Perm Buffer (PF00011-C).