

For Research Use Only

CoraLite® Plus 488-conjugated CISD1 Monoclonal antibody

Catalog Number: CL488-68030



Basic Information

Catalog Number:	GenBank Accession Number:	Purification Method:
CL488-68030	BC007043	Protein G purification
Size:	GeneID (NCBI):	CloneNo.:
100ul , Concentration: 1000 ug/ml by Nanodrop;	55847	1D7E3
Source:	UNIPROT ID:	Recommended Dilutions:
Mouse	Q9NZ45	IF/ICC 1:50-1:500
Isotype:	Full Name:	Excitation/Emission maxima wavelengths:
IgG1	CDGSH iron sulfur domain 1	493 nm / 522 nm
Immunogen Catalog Number:	Calculated MW:	
AG8560	108 aa, 12 kDa	
	Observed MW:	
	14-17 kDa	

Applications

Tested Applications:	Positive Controls:
IF/ICC, FC (Intra)	IF/ICC : H9C2 cells,
Species Specificity:	
human, mouse, rat, rabbit, chicken	

Background Information

MitoNEET, also named CISD1, belongs to a previously uncharacterized ancient family of proteins for which the hallmark is the presence of a unique 39 amino acid CDGSH domain. It is a single-pass type III membrane protein, located in mitochondrion outer membrane and may play a role in regulating maximal capacity for electron transport and oxidative phosphorylation. MitoNEET is a recently identified drug target for a commonly prescribed diabetes drug, Pioglitazone. This antibody recognizing MitoNEET (calculated 12 kDa) as a 17 kDa protein may be due to its posttranslational modification or metal binding activity.

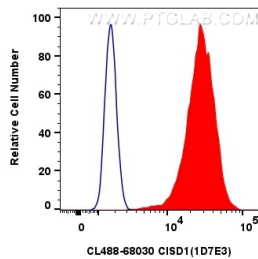
Storage

Storage:
Store at -20°C. Avoid exposure to light. Stable for one year after shipment.
Storage Buffer:
PBS with 50% Glycerol, 0.05% Proclin300, 0.5% BSA, pH 7.3.
Aliquoting is unnecessary for -20°C storage

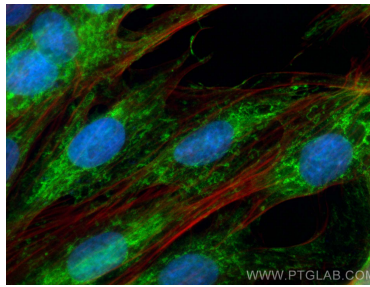
For technical support and original validation data for this product please contact:
T: 1 (888) 4PTGLAB (1-888-478-4522) (toll free in USA), or 1(312) 455-8498 (outside USA)
E: proteintech@ptglab.com
W: ptglab.com

This product is exclusively available under Proteintech Group brand and is not available to purchase from any other manufacturer.

Selected Validation Data



1x10⁶ HeLa cells were intracellularly stained with 0.8 ug CoraLite® Plus 488-conjugated C1SD1 Monoclonal antibody (CL488-68030, Clone:1D7E3) (red), or 0.8 ug CoraLite® Plus 488 Mouse IgG1 Isotype Control (MOPC-21) (CL488-65124, Clone: MOPC-21) (blue). Cells were fixed with 4% PFA and permeabilized with Flow Cytometry Perm Buffer (PF00011-C).



Immunofluorescent analysis of (4% PFA) fixed H9C2 cells using CoraLite® Plus 488 C1SD1 antibody (CL488-68030, Clone: 1D7E3) at dilution of 1:200, CL594-phalloidin (red).