

For Research Use Only

# CoraLite® Plus 488-conjugated DUSP22 Monoclonal antibody

Catalog Number:CL488-68032



## Basic Information

### Catalog Number:

CL488-68032

### Size:

100ul , Concentration: 1000 ug/ml by Nanodrop;

### Source:

Mouse

### Isotype:

IgG2a

### Immunogen Catalog Number:

AG9831

### GenBank Accession Number:

BC022847

### GeneID (NCBI):

56940

### UNIPROT ID:

Q9NRW4

### Full Name:

dual specificity phosphatase 22

### Calculated MW:

184 aa, 21 kDa

### Observed MW:

21 kDa

### Purification Method:

Protein A purification

### CloneNo.:

3B8F1

### Recommended Dilutions:

IF/ICC 1:50-1:500

### Excitation/Emission maxima wavelengths:

493 nm / 522 nm

## Applications

### Tested Applications:

IF/ICC

### Species Specificity:

Human, Mouse, Rat, Rabbit

### Positive Controls:

IF/ICC : NIH/3T3 cells,

## Background Information

DUSP22(Dual specificity protein phosphatase 22) is also named as JSP1, LMWDSP2, MKPX. It has been demonstrated to belong to a new subgroup of small DSPs anchored at the membranes by an N-terminal myristic acid moiety and DUSP22 play a regulatory role in the JNK or p38 MAPK pathways(PMID:17384676). It has 2 isoforms produced by alternative splicing with the molecular weight of 21 kDa and 23 kDa.

## Storage

### Storage:

Store at -20°C. Avoid exposure to light. Stable for one year after shipment.

### Storage Buffer:

PBS with 50% Glycerol, 0.05% Proclin300, 0.5% BSA, pH 7.3.

Aliquoting is unnecessary for -20°C storage

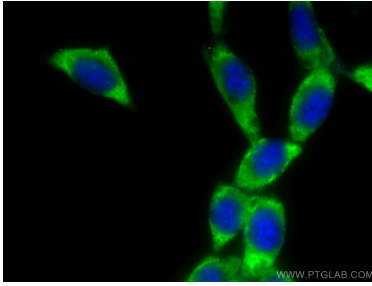
For technical support and original validation data for this product please contact:

T: 1 (888) 4PTGLAB (1-888-478-4522) (toll free in USA), or 1(312) 455-8498 (outside USA)

E: [proteintech@ptglab.com](mailto:proteintech@ptglab.com)  
W: [ptglab.com](http://ptglab.com)

This product is exclusively available under Proteintech Group brand and is not available to purchase from any other manufacturer.

## Selected Validation Data



Immunofluorescent analysis of (-20°C Methanol)  
fixed NIH/3T3 cells using CoraLite® Plus 488  
DUSP22 antibody (CL488-68032, Clone: 3B8F1 ) at  
dilution of 1:100.