

For Research Use Only

CoraLite® Plus 488-conjugated CD35 Monoclonal antibody

Catalog Number: CL488-68033



Basic Information

Catalog Number:

CL488-68033

Size:

100ul , Concentration: 1000 ug/ml by Nanodrop;

Source:

Mouse

Isotype:

IgG1

Immunogen Catalog Number:

AG30268

GenBank Accession Number:

NM_000573

GeneID (NCBI):

1378

ENSEMBL Gene ID:

ENSG00000203710

UNIPROT ID:

P17927

Full Name:

complement component (3b/4b) receptor 1 (Knops blood group)

Calculated MW:

224 kDa

Purification Method:

Protein G purification

CloneNo.:

1B8E6

Recommended Dilutions:

IF-P 1:50-1:500

Excitation/Emission maxima wavelengths:

493 nm / 522 nm

Applications

Tested Applications:

IF-P

Species Specificity:

Human

Positive Controls:

IF-P : human appendicitis tissue,

Background Information

CD35, also known as complement receptor type 1 (CR1) or C3b/C4b receptor, is a single-chain glycoprotein consisting of 30 repeating homologous protein domains known as short consensus repeats (~60 amino acids each) followed by transmembrane and cytoplasmic domains (PMID: 8765013). CD35 is variably expressed by granulocytes, monocytes, B cells, some T cells, erythrocytes, follicular dendritic cells, Langerhans cells, and glomerular podocytes (PMID: 19004497). CD35 acts as a receptor for C3b and C4b and plays important roles in the regulation of the complement cascade and clearance of immune complexes. A soluble form of CD35 has been found in plasma (PMID: 3156931). It has been reported that soluble CD35 is produced by a proteolytic cleavage in the C-terminal region of CD35 transmembrane domain (PMID: 9405292).

Storage

Storage:

Store at -20°C. Avoid exposure to light. Stable for one year after shipment.

Storage Buffer:

PBS with 50% Glycerol, 0.05% Proclin300, 0.5% BSA, pH 7.3.

Aliquoting is unnecessary for -20°C storage

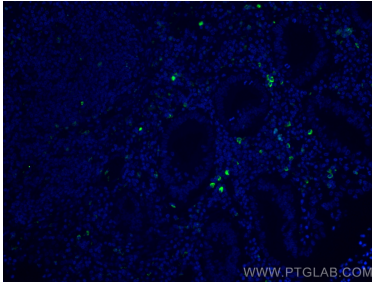
For technical support and original validation data for this product please contact:

T: 1 (888) 4PTGLAB (1-888-478-4522) (toll free in USA), or 1(312) 455-8498 (outside USA)

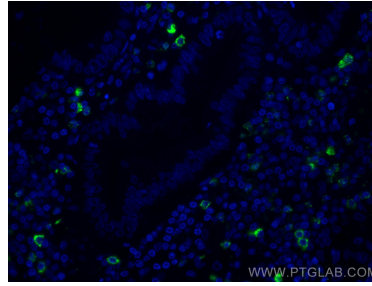
E: proteintech@ptglab.com
W: ptglab.com

This product is exclusively available under Proteintech Group brand and is not available to purchase from any other manufacturer.

Selected Validation Data



Immunofluorescent analysis of (4% PFA) fixed human appendicitis tissue using CoraLite® Plus 488 CD35 antibody (CL488-68033, Clone: 1B8E6) at dilution of 1:200.



Immunofluorescent analysis of (4% PFA) fixed human appendicitis tissue using CoraLite® Plus 488 CD35 antibody (CL488-68033, Clone: 1B8E6) at dilution of 1:200.