

For Research Use Only

# CoraLite® Plus 488-conjugated ALDH3A1 Monoclonal antibody



Catalog Number:CL488-68036

## Basic Information

<b>Catalog Number:</b> CL488-68036	<b>GenBank Accession Number:</b> BC004370	<b>Purification Method:</b> Protein G purification
<b>Size:</b> 100ul , Concentration: 1000 µg/ml by Nanodrop;	<b>GeneID (NCBI):</b> 218	<b>CloneNo.:</b> 1D4G7
<b>Source:</b> Mouse	<b>Full Name:</b> aldehyde dehydrogenase 3 family, memberA1	<b>Excitation/Emission maxima wavelengths:</b> 488 nm / 515 nm
<b>Isotype:</b> IgG1	<b>Calculated MW:</b> 50 kDa	
<b>Immunogen Catalog Number:</b> AG8125	<b>Observed MW:</b> 50 kDa	

## Applications

**Tested Applications:**  
FC (Intra)

**Species Specificity:**  
Human

## Background Information

ALDH3A1(Aldehyde dehydrogenase, dimeric NADP-preferring), also named as ALDH3, is a member of the ALDH superfamily, which consists of NAD(P)<sup>+</sup>-dependent enzymes that catalyse the oxidation of a wide variety of endogenously produced and exogenous aldehydes to their corresponding acids. It is expressed at high concentrations in the mammalian cornea and it is believed that it protects this vital tissue and the rest of the eye against UVlight-induced damage.(PMID:12943535). It can exist as a dimer(PMID:16919242).

## Storage

**Storage:**  
Store at -20°C. Avoid exposure to light. Stable for one year after shipment.

**Storage Buffer:**  
PBS with 50% Glycerol, 0.05% Proclin300, 0.5% BSA, pH 7.3.

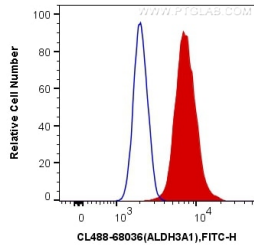
Aliquoting is unnecessary for -20°C storage

\*\*\* 20ul sizes contain 0.1% BSA

For technical support and original validation data for this product please contact:  
T: 1 (888) 4PTGLAB (1-888-478-4522) (toll free in USA), or 1(312) 455-8498 (outside USA) E: proteintech@ptglab.com W: ptglab.com

This product is exclusively available under Proteintech Group brand and is not available to purchase from any other manufacturer.

## Selected Validation Data



1X10<sup>6</sup> HEK-293 cells were intracellularly stained with 0.4 ug CoraLite® Plus 488 Anti-Human ALDH3A1 (CL488-68036, Clone:1D4G7) (red), or 0.4 ug Control Antibody. Cells were fixed with 4% PFA and permeabilized with Flow Cytometry Perm Buffer (PF00011-C).