

For Research Use Only

# CoraLite® Plus 488-conjugated ZFP36L1 Monoclonal antibody



Catalog Number: **CL488-68038**

## Basic Information

<b>Catalog Number:</b> CL488-68038	<b>GenBank Accession Number:</b> BC018340	<b>Purification Method:</b> Protein A purification
<b>Size:</b> 100ul , Concentration: 1000 µg/ml by Nanodrop;	<b>GeneID (NCBI):</b> 677	<b>CloneNo.:</b> 1H6G6
<b>Source:</b> Mouse	<b>Full Name:</b> zinc finger protein 36, C3H type-like 1	<b>Recommended Dilutions:</b> 1F 1:300-1:1200
<b>Isotype:</b> IgG2b	<b>Calculated MW:</b> 338 aa, 36 kDa	<b>Excitation/Emission maxima wavelengths:</b> 493 nm / 522 nm
<b>Immunogen Catalog Number:</b> AG30469	<b>Observed MW:</b> 36 kDa	

## Applications

<b>Tested Applications:</b> FC (Intra), IF	<b>Positive Controls:</b> IF : HepG2 cells,
<b>Species Specificity:</b> Human, Rat	

## Background Information

As a member of the Tristetraprolin (TTP) RNA binding protein family, ZFP36L1 regulate gene expression post-transcriptionally by promoting mRNA decay. In mammals, ZFP36L1 and its family members have been shown to regulate development, cell differentiation, cell cycle, apoptosis and anti-cancer capability by targeting an extensive overlapping repertoire of mRNAs.

## Storage

**Storage:**  
Store at -20°C. Avoid exposure to light. Stable for one year after shipment.  
**Storage Buffer:**  
PBS with 50% Glycerol, 0.05% Proclin300, 0.5% BSA, pH 7.3.  
Aliquoting is unnecessary for -20°C storage

**\*\*\* 20ul sizes contain 0.1% BSA**

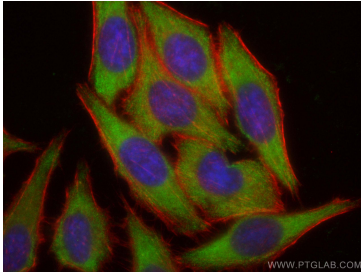
For technical support and original validation data for this product please contact:

T: 1 (888) 4PTGLAB (1-888-478-4522) (toll free  
in USA), or 1(312) 455-8498 (outside USA)

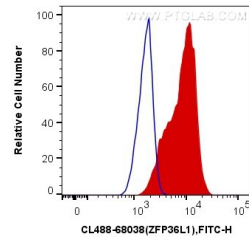
E: [proteintech@ptglab.com](mailto:proteintech@ptglab.com)  
W: [ptglab.com](http://ptglab.com)

**This product is exclusively available under Proteintech Group brand and is not available to purchase from any other manufacturer.**

## Selected Validation Data



Immunofluorescent analysis of (-20°C Ethanol) fixed HepG2 cells using CoraLite® Plus 488 ZFP36L1 antibody (CL488-68038, Clone: 1H6G6) at dilution of 1:600, CL594-phalloidin (red).



1X10<sup>6</sup> HeLa cells were intracellularly stained with 0.4 ug CoraLite® Plus 488 Anti-Human ZFP36L1 (CL488-68038, Clone:1H6G6) (red), or 0.4 ug Mouse IgG2b Isotype Control (CL488-66360-3, Clone: K11B8C4B5) (blue). Cells were fixed with 4% PFA and permeabilized with Flow Cytometry Perm Buffer (PF00011-C).