

For Research Use Only

CoraLite® Plus 488-conjugated PAIP1 Monoclonal antibody

Catalog Number: CL488-68042



Basic Information

Catalog Number: CL488-68042	GenBank Accession Number: BC005295	Purification Method: Protein A purification
Size: 100ul , Concentration: 1000 ug/ml by Nanodrop;	GeneID (NCBI): 10605	CloneNo.: 2H9D4
Source: Mouse	UNIPROT ID: Q9H074	Recommended Dilutions: IF/ICC 1:50-1:500
Isotype: IgG2b	Full Name: poly(A) binding protein interacting protein 1	Excitation/Emission maxima wavelengths: 493 nm / 522 nm
Immunogen Catalog Number: AG16773	Calculated MW: 70 kDa	
	Observed MW: 40-45kDa, 62kDa	

Applications

Tested Applications: IF/ICC, FC (Intra)	Positive Controls: IF/ICC : HeLa cells,
Species Specificity: human, mouse, rabbit	

Background Information

PAIP1 is a PABP-binding protein that contains two distinct PABP-binding motifs (PAMs). PAM1 binds to RNA recognition motif 2 in the N terminus of PABP; PAM2, which is a conserved region comprising approximately 15 amino acids, binds to the PABC domain of PABP. PAIP1 acts as a coactivator in the regulation of translation initiation of poly(A)-containing mRNAs.

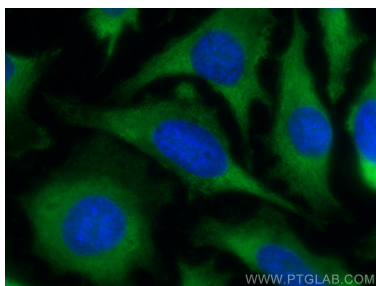
Storage

Storage:
Store at -20°C. Avoid exposure to light. Stable for one year after shipment.
Storage Buffer:
PBS with 50% Glycerol, 0.05% Proclin300, 0.5% BSA, pH 7.3.
Aliquoting is unnecessary for -20°C storage

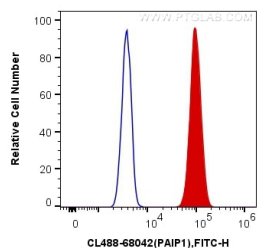
For technical support and original validation data for this product please contact:
T: 1 (888) 4PTGLAB (1-888-478-4522) (toll free in USA), or 1(312) 455-8498 (outside USA)
E: proteintech@ptglab.com
W: ptglab.com

This product is exclusively available under Proteintech Group brand and is not available to purchase from any other manufacturer.

Selected Validation Data



Immunofluorescent analysis of (-20°C Methanol) fixed HeLa cells using CoraLite® Plus 488 PAIP1 antibody (CL488-68042, Clone: 2H9D4) at dilution of 1:200.



1X10⁶ HeLa cells were intracellularly stained with 0.4 ug CoraLite® Plus 488 Anti-Human PAIP1 (CL488-68042, Clone:2H9D4) (red), or 0.4 ug Mouse IgG2b Isotype Control (CL488-66360-3, Clone: K11B8C4B5) (blue). Cells were fixed with 4% PFA and permeabilized with Flow Cytometry Perm Buffer (PF00011-C).