

For Research Use Only

# CoraLite® Plus 488-conjugated RFX1 Monoclonal antibody

Catalog Number: CL488-68057



## Basic Information

Catalog Number:

CL488-68057

Size:

100ul , Concentration: 1000 ug/ml by Nanodrop;

Source:

Mouse

Isotype:

IgG1

Immunogen Catalog Number:

AG25442

GenBank Accession Number:

BC049826

GeneID (NCBI):

5989

UNIPROT ID:

P22670

Full Name:

regulatory factor X, 1 (influences HLA class II expression)

Calculated MW:

105 kDa

Observed MW:

135 kDa

Purification Method:

Protein G purification

CloneNo.:

1G10H6

Excitation/Emission maxima wavelengths:

493 nm / 522 nm

## Applications

Tested Applications:

FC (Intra)

Species Specificity:

human

## Background Information

RFX1, also named as MHC class II regulatory factor RFX1, is a 979 amino acid protein which contains 1 RFX-type winged-helix DNA-binding domain and belongs to the RFX family. RFX1 can binds DNA as a homodimer and heterodimerizes with RFX2 and RFX3. RFX1 as a regulatory factor is essential for MHC class II genes expression. RFX1 protein is modified after translation and its molecular weight could be migrate to 130-140 kDa (PMID: 20189986).

## Storage

Storage:

Store at -20°C. Avoid exposure to light. Stable for one year after shipment.

Storage Buffer:

PBS with 50% Glycerol, 0.05% Proclin300, 0.5% BSA, pH 7.3.

Aliquoting is unnecessary for -20°C storage

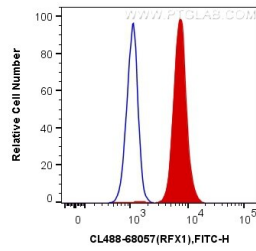
For technical support and original validation data for this product please contact:

T: 1 (888) 4PTGLAB (1-888-478-4522) (toll free in USA), or 1(312) 455-8498 (outside USA)

E: [proteintech@ptglab.com](mailto:proteintech@ptglab.com)  
W: [ptglab.com](http://ptglab.com)

This product is exclusively available under Proteintech Group brand and is not available to purchase from any other manufacturer.

## Selected Validation Data



1X10<sup>6</sup> Jurkat cells were intracellularly stained with 0.2 ug CoraLite® Plus 488 Anti-Human RFX1 (CL488-68057, Clone:1G10H6) (red), or 0.2 ug x. Cells were fixed and permeabilized with True-Nuclear Transcription Factor Buffer Set.