

For Research Use Only

CoraLite® Plus 488-conjugated GEN1 Monoclonal antibody

Catalog Number: CL488-68060



Basic Information

Catalog Number:

CL488-68060

Size:

100ul , Concentration: 1000 ug/ml by Nanodrop;

Source:

Mouse

Isotype:

IgG1

Immunogen Catalog Number:

AG31247

GenBank Accession Number:

NM_182625

GeneID (NCBI):

348654

UNIPROT ID:

Q17RS7

Full Name:

Gen homolog 1, endonuclease (Drosophila)

Calculated MW:

103 kDa

Observed MW:

98-100 kDa

Purification Method:

Protein G purification

CloneNo.:

1A10D10

Excitation/Emission maxima wavelengths:

493 nm / 522 nm

Applications

Tested Applications:

FC (Intra)

Species Specificity:

Human

Background Information

GEN1 is a endonuclease which resolves Holliday junctions (HJs) by the introduction of symmetrically related cuts across the junction point, to produce nicked duplex products in which the nicks can be readily ligated. GEN1 efficiently cleaves both single and double HJs contained within large recombination intermediates.

Storage

Storage:

Store at -20°C. Avoid exposure to light. Stable for one year after shipment.

Storage Buffer:

PBS with 50% Glycerol, 0.05% Proclin300, 0.5% BSA, pH 7.3.

Aliquoting is unnecessary for -20°C storage

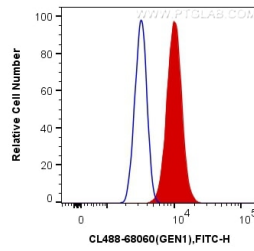
For technical support and original validation data for this product please contact:

T: 1 (888) 4PTGLAB (1-888-478-4522) (toll free in USA), or 1(312) 455-8498 (outside USA)

E: proteintech@ptglab.com
W: ptglab.com

This product is exclusively available under Proteintech Group brand and is not available to purchase from any other manufacturer.

Selected Validation Data



1X10⁶ A431 cells were intracellularly stained with 0.4 μ g CoraLite® Plus 488 Anti-Human GEN1 (CL488-68060, Clone:1A10D10) (red), or 0.4 μ g Control Antibody. Cells were fixed and permeabilized with Transcription Factor Staining Buffer Kit (PF00011).