

For Research Use Only

CoraLite® Plus 488-conjugated ARF1 Monoclonal antibody

Catalog Number:CL488-68069



Basic Information

Catalog Number:	GenBank Accession Number:	Purification Method:
CL488-68069	BC009247	Protein G purification
Size:	GeneID (NCBI):	CloneNo.:
100ul , Concentration: 1000 ug/ml by Nanodrop;	375	1C10E3
Source:	UNIPROT ID:	Recommended Dilutions:
Mouse	P84077	IF/ICC 1:50-1:500
Isotype:	Full Name:	Excitation/Emission maxima wavelengths:
IgG1	ADP-ribosylation factor 1	493 nm / 522 nm
Immunogen Catalog Number:	Calculated MW:	
AG28021	21 kDa	
	Observed MW:	
	18-21 kDa	

Applications

Tested Applications:	Positive Controls:
IF/ICC, FC (Intra)	IF/ICC : HeLa cells,
Species Specificity:	
human, mouse, rat, rabbit	

Background Information

ADP-ribosylation factors (ARFs) are members of the ARF family of GTP-binding proteins of the Ras superfamily. ARFs bind and regulate GTP/GDP cycle by alternating between the active GTP-bound and inactive GDP-bound conformations. ARF family proteins are essential and ubiquitous in eukaryotes. Six highly conserved members of the family have been identified in mammalian cells. They function in vesicular traffic and actin remodelling and other bioprocesses in cells. The ARF1 protein is localized to the Golgi apparatus and has a central role in intra-Golgi transport. It mainly functions in coat recruitment.(PMID: 7759471, PMID: 16042562).

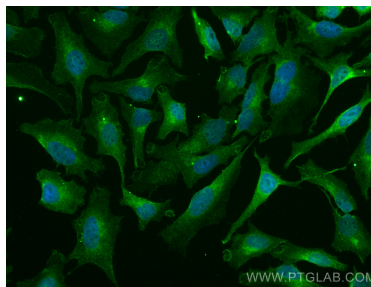
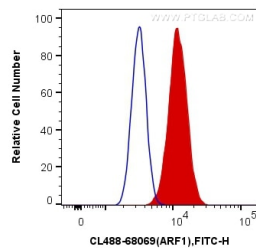
Storage

Storage:
Store at -20°C. Avoid exposure to light. Stable for one year after shipment.
Storage Buffer:
PBS with 50% Glycerol, 0.05% Proclin300, 0.5% BSA, pH 7.3.
Aliquoting is unnecessary for -20°C storage

For technical support and original validation data for this product please contact:
T: 1 (888) 4PTGLAB (1-888-478-4522) (toll free in USA), or 1(312) 455-8498 (outside USA)
E: proteintech@ptglab.com
W: ptglab.com

This product is exclusively available under Proteintech Group brand and is not available to purchase from any other manufacturer.

Selected Validation Data



1X10⁶ HeLa cells were intracellularly stained with 0.4 ug CoraLite® Plus 488 Anti-Human ARF1 (CL488-68069, Clone:1C10E3) (red), or 0.4 ug Mouse IgG1 Isotype Control (CL488-66360, Clone: T1F8D3F10) (blue). Cells were fixed with 4% PFA and permeabilized with Flow Cytometry Perm Buffer (PF00011-C).

Immunofluorescent analysis of (4% PFA) fixed HeLa cells using CoraLite® Plus 488 ARF1 antibody (CL488-68069, Clone: 1C10E3) at dilution of 1:200.