

For Research Use Only

CoraLite® Plus 488-conjugated CEP89, CCDC123 Monoclonal antibody

Catalog Number: CL488-68112



Basic Information

Catalog Number: CL488-68112	GenBank Accession Number: BC136328	Purification Method: Protein G purification
Size: 100ul , Concentration: 1000 ug/ml by Nanodrop;	GeneID (NCBI): 84902	CloneNo.: 1F12C5
Source: Mouse	UNIPROT ID: Q965T8	Recommended Dilutions: IF/ICC 1:50-1:500
Isotype: IgG1	Full Name: coiled-coil domain containing 123	Excitation/Emission maxima wavelengths: 493 nm / 522 nm
Immunogen Catalog Number: AG28339	Calculated MW: 783 aa, 90 kDa	
	Observed MW: 90 kDa	

Applications

Tested Applications: IF/ICC	Positive Controls: IF/ICC : HeLa cells,
Species Specificity: Human, mouse	

Background Information

CCDC123 (as known as CEP123), also named as CEP89, encodes for a protein required for ciliogenesis. It plays a role in mitochondrial metabolism by modulating complex IV activity. It has been shown that CEP123 is localized to the distal appendages of the mother centriole and the localization of CEP123 is cell cycle-dependent with its levels decreasing during mitosis. CEP123 depletion can cause defects in ciliary vesicle formation and prevent the formation of a ciliary vesicle at the distal end of the mother centriole. It is possible that CEP123 is involved in regulating the recruitment of membranes to the centrosome through its interaction with CEP290 (PMID:23575228, 23789104, 23348840).

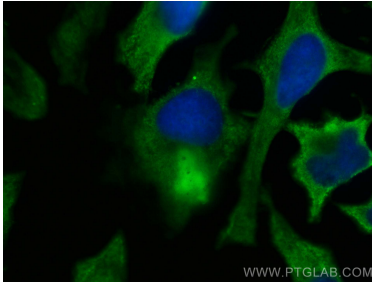
Storage

Storage:
Store at -20°C. Avoid exposure to light. Stable for one year after shipment.
Storage Buffer:
PBS with 50% Glycerol, 0.05% Proclin300, 0.5% BSA, pH 7.3.
Aliquoting is unnecessary for -20°C storage

For technical support and original validation data for this product please contact:
T: 1 (888) 4PTGLAB (1-888-478-4522) (toll free in USA), or 1(312) 455-8498 (outside USA)
E: proteintech@ptglab.com
W: ptglab.com

This product is exclusively available under Proteintech Group brand and is not available to purchase from any other manufacturer.

Selected Validation Data



Immunofluorescent analysis of (-20°C Methanol) fixed HeLa cells using Coralite® Plus 488 CEP89, CCDC123 antibody (CL488-68112, Clone: 1F12C5) at dilution of 1:200.