

For Research Use Only

CoraLite® Plus 488-conjugated DCT Monoclonal antibody

Catalog Number: CL488-68114



Basic Information

Catalog Number:

CL488-68114

Size:

100ul , Concentration: 1000 ug/ml by Nanodrop;

Source:

Mouse

Isotype:

IgG1

Immunogen Catalog Number:

AG26165

GenBank Accession Number:

BC028311

GeneID (NCBI):

1638

UNIPROT ID:

P40126

Full Name:

dopachrome tautomerase
(dopachrome delta-isomerase,
tyrosine-related protein 2)

Calculated MW:

519 aa, 59 kDa

Observed MW:

55-63 kDa

Purification Method:

Protein G purification

CloneNo.:

1B3D4

Recommended Dilutions:

IF/ICC 1:50-1:500

Excitation/Emission maxima wavelengths:

493 nm / 522 nm

Applications

Tested Applications:

IF/ICC

Species Specificity:

human, mouse, pig

Positive Controls:

IF/ICC : A549 cells,

Background Information

DCT(L-dopachrome Delta-isomerase) is also named as TYRP2,TRP2 and belongs to the tyrosinase family.human TYRP2 protein has 83% identity and 90% similarity to the mouse sequence and has all the structural characteristics of the tyrosinase protein family, including a signal peptide, 15 conserved cysteine residues, 2 copper-binding domains, and a C-terminal membrane-spanning region(PMID:8206391).

Storage

Storage:

Store at -20°C. Avoid exposure to light. Stable for one year after shipment.

Storage Buffer:

PBS with 50% Glycerol, 0.05% Proclin300, 0.5% BSA, pH 7.3.

Aliquoting is unnecessary for -20°C storage

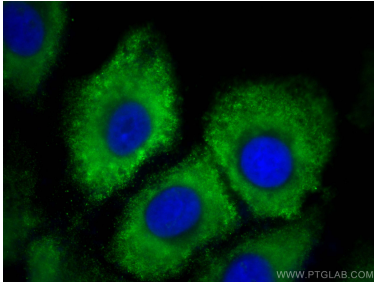
For technical support and original validation data for this product please contact:

T: 1 (888) 4PTGLAB (1-888-478-4522) (toll free in USA), or 1(312) 455-8498 (outside USA)

E: proteintech@ptglab.com
W: ptglab.com

This product is exclusively available under Proteintech Group brand and is not available to purchase from any other manufacturer.

Selected Validation Data



Immunofluorescent analysis of (-20°C Methanol) fixed A549 cells using CoraLite® Plus 488 DCT antibody (CL488-68114, Clone: 1B3D4) at dilution of 1:200.